

Wireless IP Camera

iOS App User's Manual

Note: To protect your privacy, please change the initial password after login. Please keep your user name and password safely.

Contents

1. iOS Device Requirements.....	3
2. Network Connection.....	3
3. Software setup.....	3
4. Sign Up, Sign In.....	3
5. Add Camera.....	4
6. Network configuration.....	5
6.1 Wi-Fi configuration.....	5
6.2 Ethernet configuration.....	6
7. The client software system operation.....	7
7.1 Camera List Previews.....	7
7.2 Preview & Status.....	7
7.3 Camera List Menu.....	7
7.4 Button page.....	8
7.5 Image settings.....	9
7.6 Pan, Tilt, Zoom.....	9
7.6 Records.....	10
7.7 Settings.....	11
7.7.1 About.....	11
7.7.2 Nickname.....	11
7.7.3 Device Admin Password.....	12
7.7.4 Device Guest Password.....	13
7.7.5 Network.....	13
7.7.6 OSD.....	14
7.7.7 SD card.....	14
7.7.8 Storage Device.....	15
7.7.9 Motion and Notification.....	15
7.7.10 Scheduled alerting.....	16
7.7.11 Scheduled recording.....	16
7.7.12 Date / Time.....	17
7.7.13 System.....	17
7.7.14 Others.....	18

1. iOS Device Requirements

MIPC app requires ios5.0 or later.

2. Network Connection

Refer to "Quick Install Guide " to get the camera setup with your Internet.

3. Software setup

Install MIPC from the Play Store (Previously Android Market) .
Search for :**MIPC**. The app looks like picture as follow.

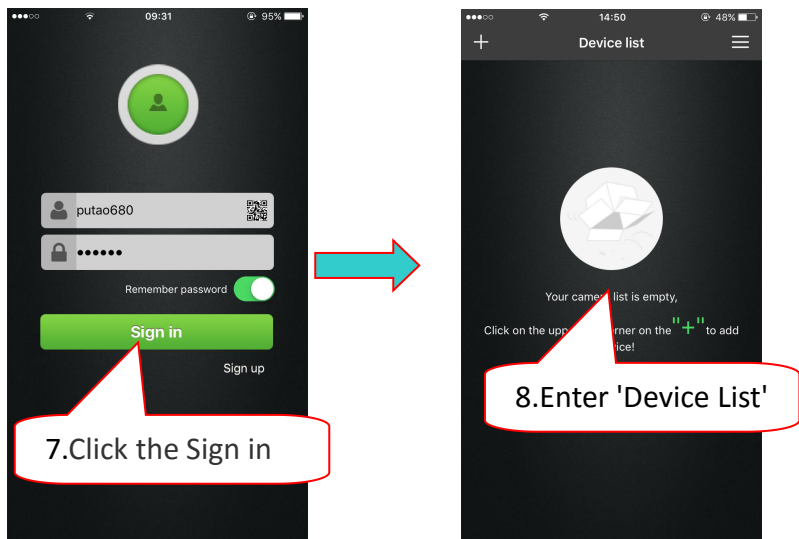


4. Sign Up ,Sign In

Open mipc , login interface as follow :

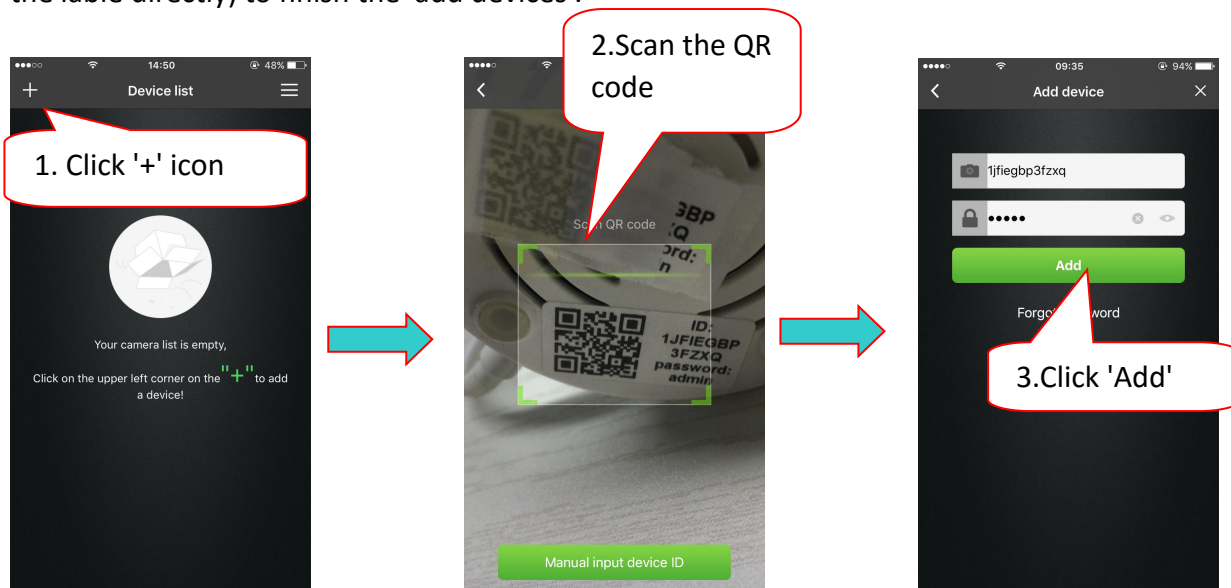


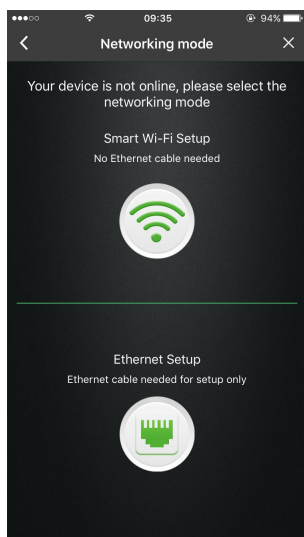
Note: The account begin with a letter, it may not less than 6 digitals ,The password also not less than 6 digitals



5. Add Camera

Enter 'Device List' and click '+' icon at the top of left corner. Then scan the QR code (or enter the ID code in the table directly) to finish the 'add devices'.

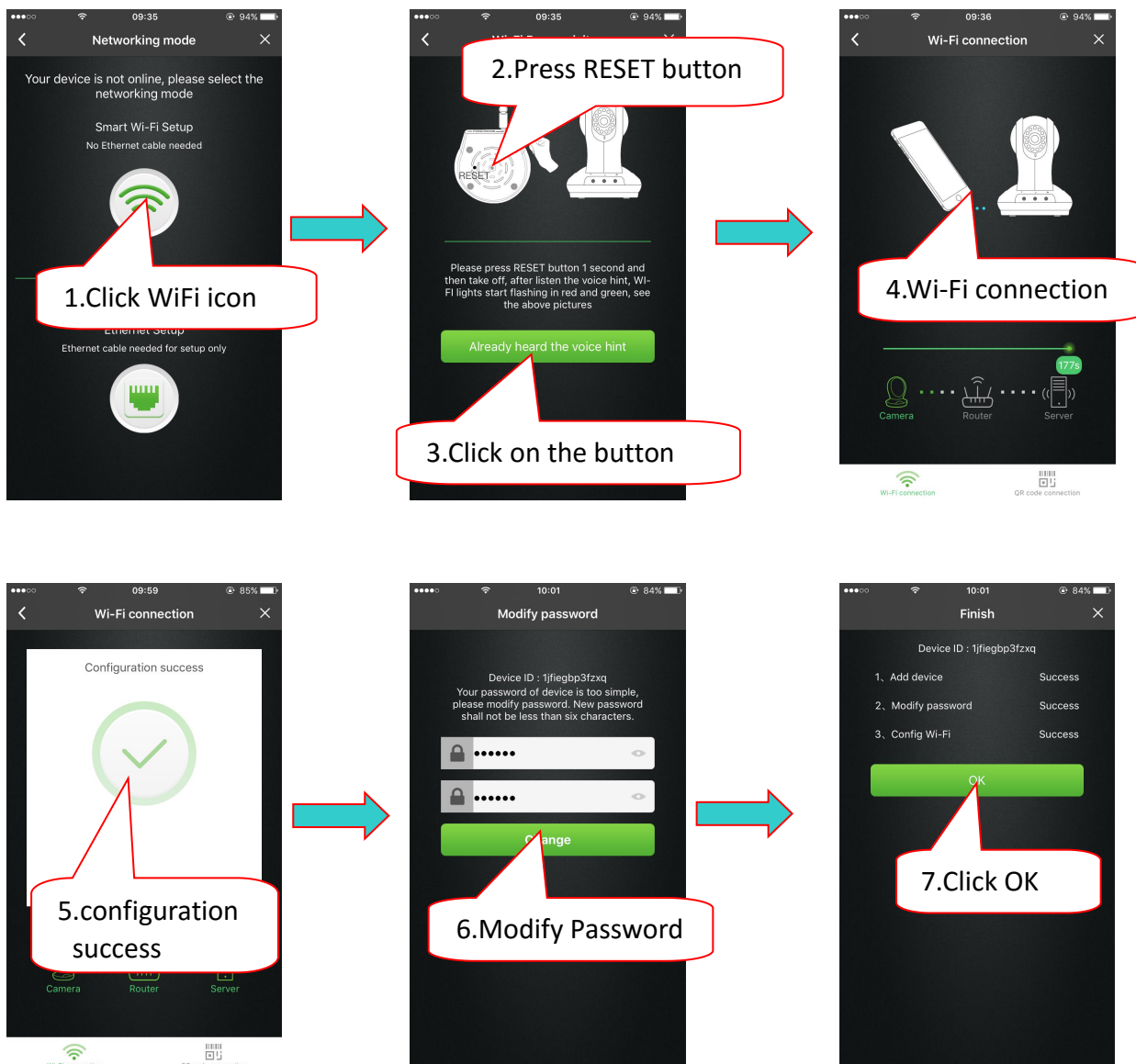


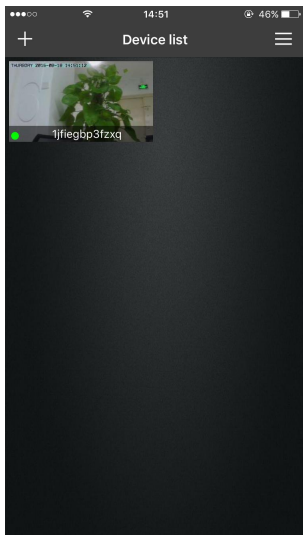


6. Network configuration

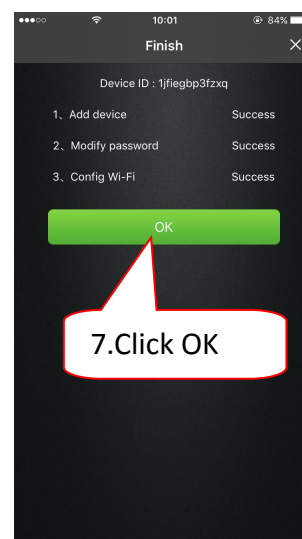
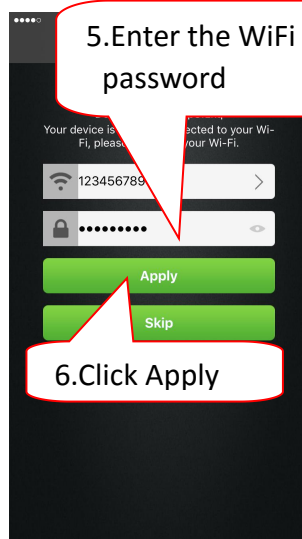
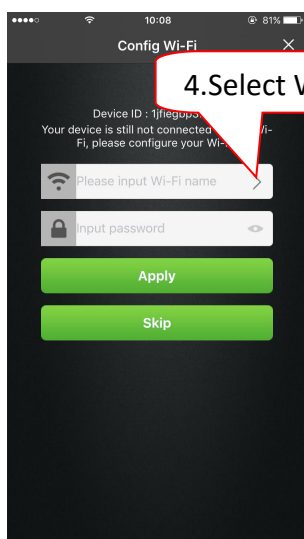
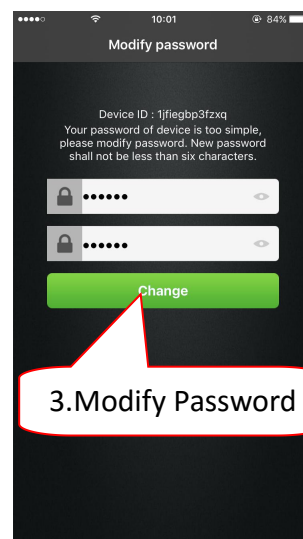
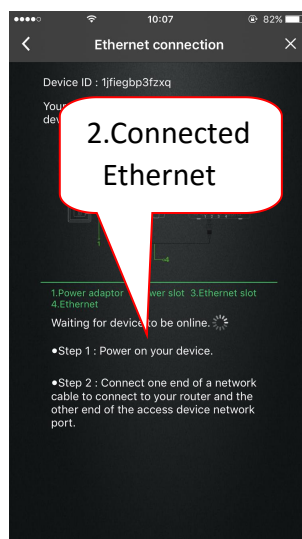
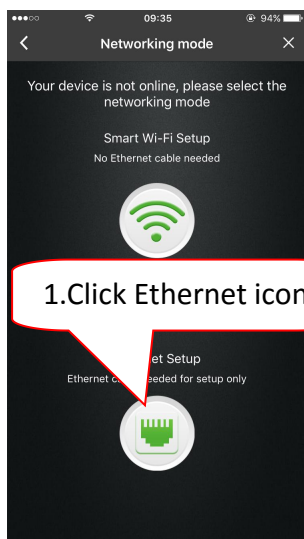
When network configuration, you can choose Wi-Fi configuration or ethernet configuration.

6.1 Wi-Fi configuration





6.2 Ethernet configuration

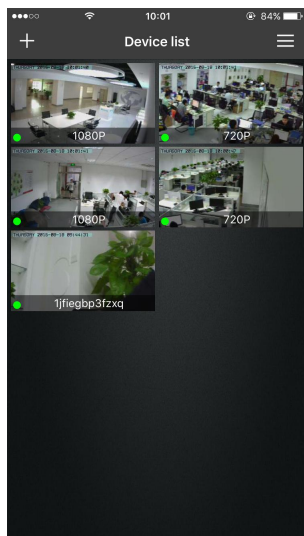


Note: Out of WiFi condition, you can skip the WiFi configuration step.

7. The client software system operation

7.1 Camera List Previews

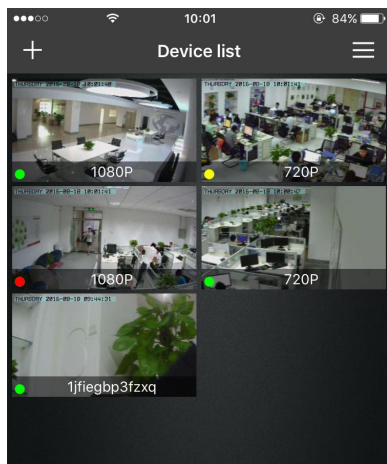
The camera list panel contains all cloud cameras you have added to your account. Each preview picture Has various indocations for online, password changed status,offline or alarm.



7.2 Preview & Status

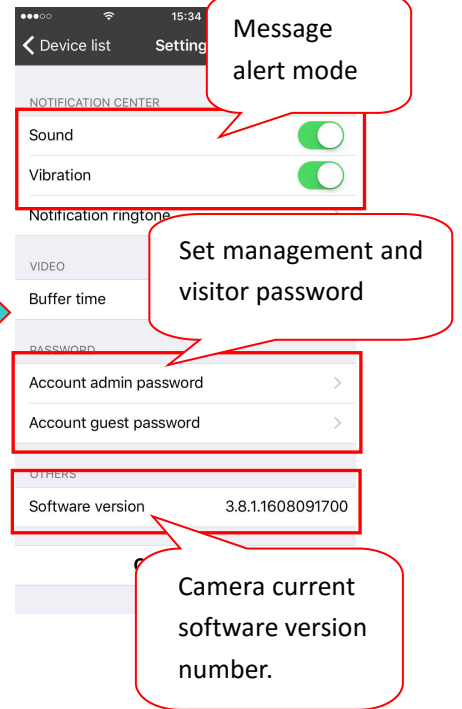
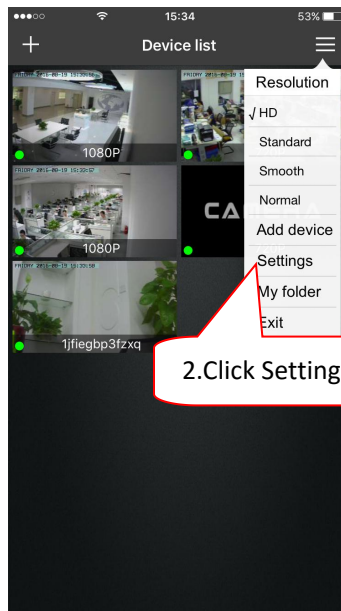
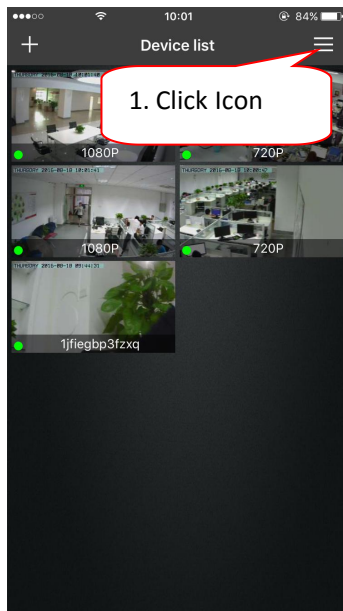
Each picture in the Camera List has a camera name label.Pull down anywhere on the screen to refresh the preview picture.

The GREEN, RED or YELLOW DOT on the lower left of each preview picture indicates connectivity status as online offline or Password has changed respectively.



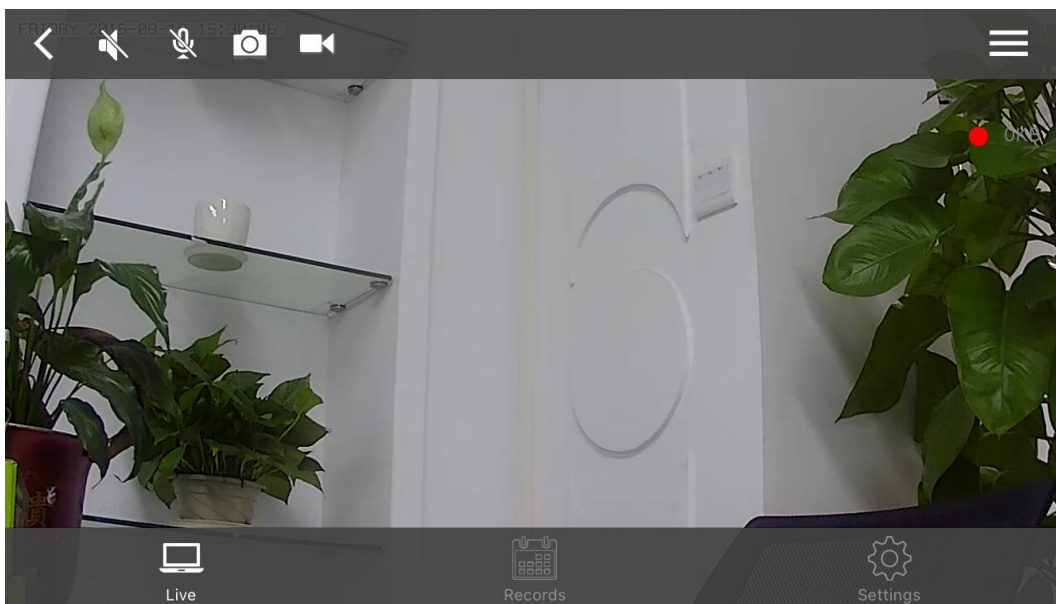
7.3 Camera List Menu

The first option in this menu is the selection of resolution for all cameras. You may choose between four Resolutions :HD,standard,Smooth and Normal



7.4 Button page

To view a camera's live feed, touch a preview picture. Initial display will show a navigation bar with Buttons of speaker, microphone, snapshot, record and day&night setting buttons. The navigation bar will disappear after two seconds. Touch anywhere on the live view to activate it again.



Voice: Turn on the mic and speaker then speak .




Two-way audio: Speak when pressing the two-way audio button.

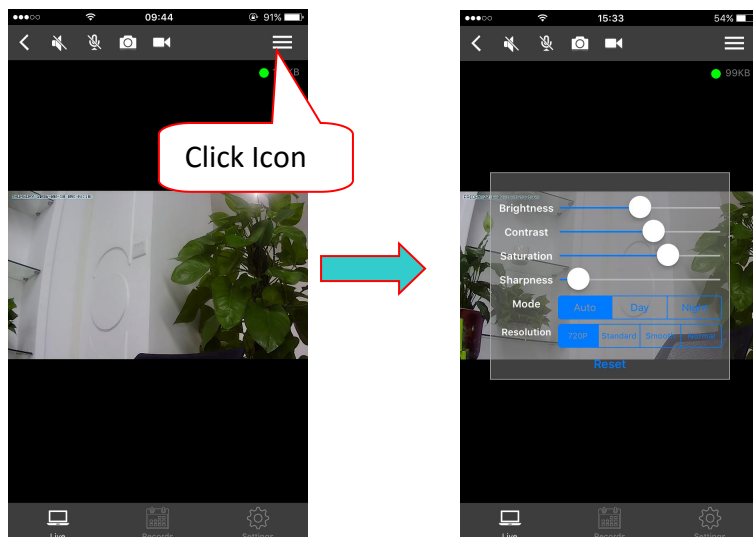


Snapshot button: Click the button for playing video capture pictures.



Temporary manual recording button (the file recorded to micro SD card): Click the buttons on the audio / video recording, recording icon indicates .NOTE: This video button function applies only to temporary manually recording.

7.5 Image settings



1、Brightness / Contrast / Saturation / Sharpness: video images can adjust the parameters of the corresponding (Such as the right to adjust these parameters will result in poor image quality display we may not recommend users adjust of these parameters).

2、Mode :

- (1) **auto:** Infrared lamp's on and off is based on the environment around the photosensitive sensor.
- (2) **Day:** IP camera is switch into daytime mode, infrared lamp is off.
- (3) **Night:** IP camera is switch into night mode, infrared lamp is on.

3、Resolution: User can choose the resolution of the images.

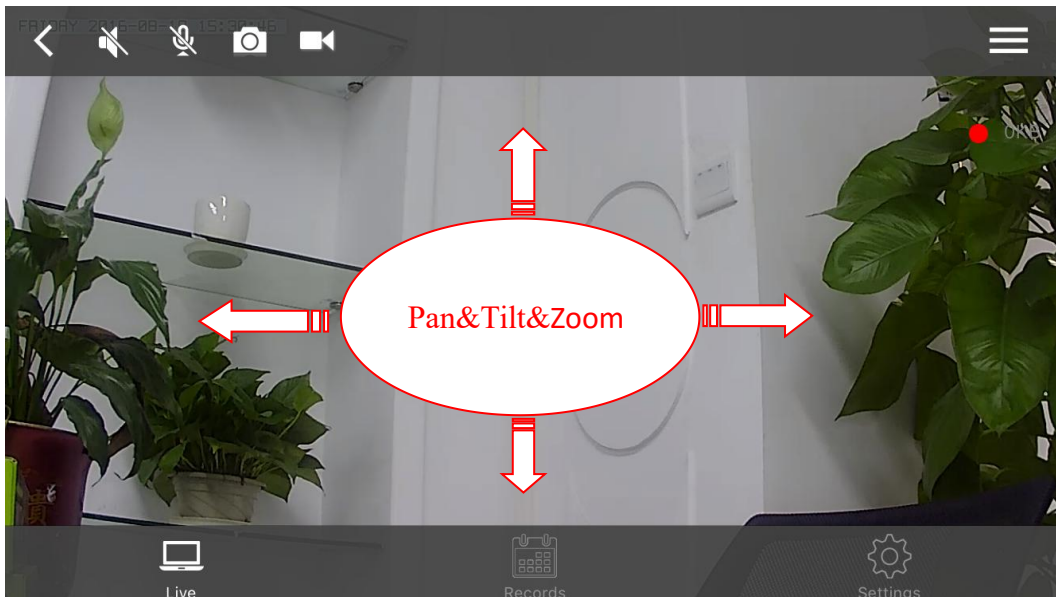
4、Reset: Click "Reset", you can restore brightness / contrast / saturation / sharpness back to the factory settings.

7.6 Pan, Tilt, Zoom

Pan: Touch and swipe to the left or right to rotate the camera left or right.

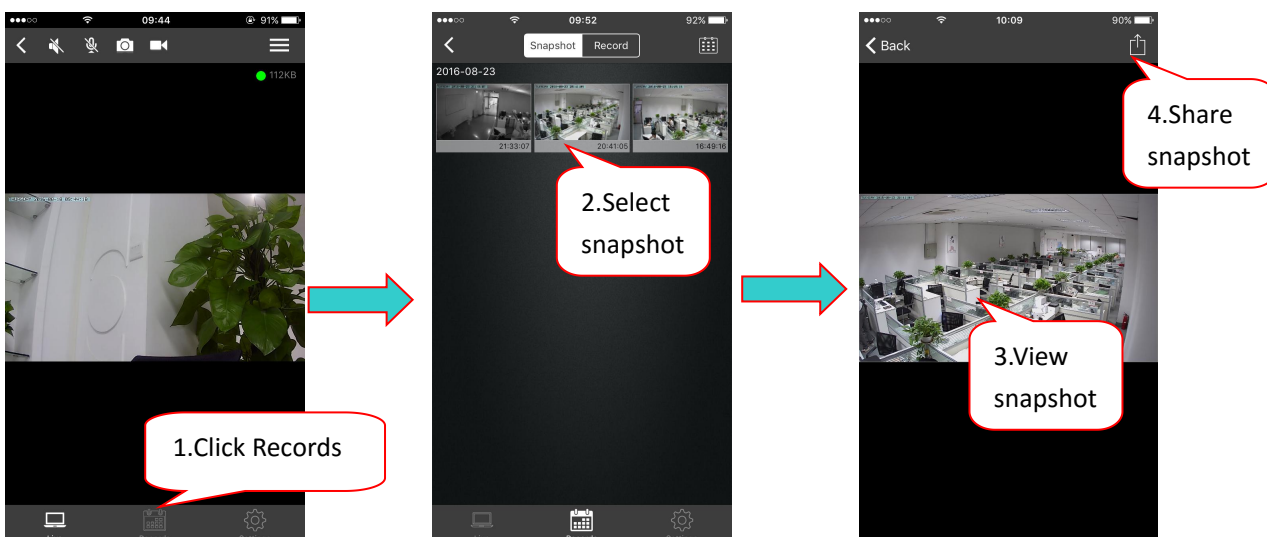
Tilt: Likewise, touch and swipe up or down to tilt the camera view up or down.

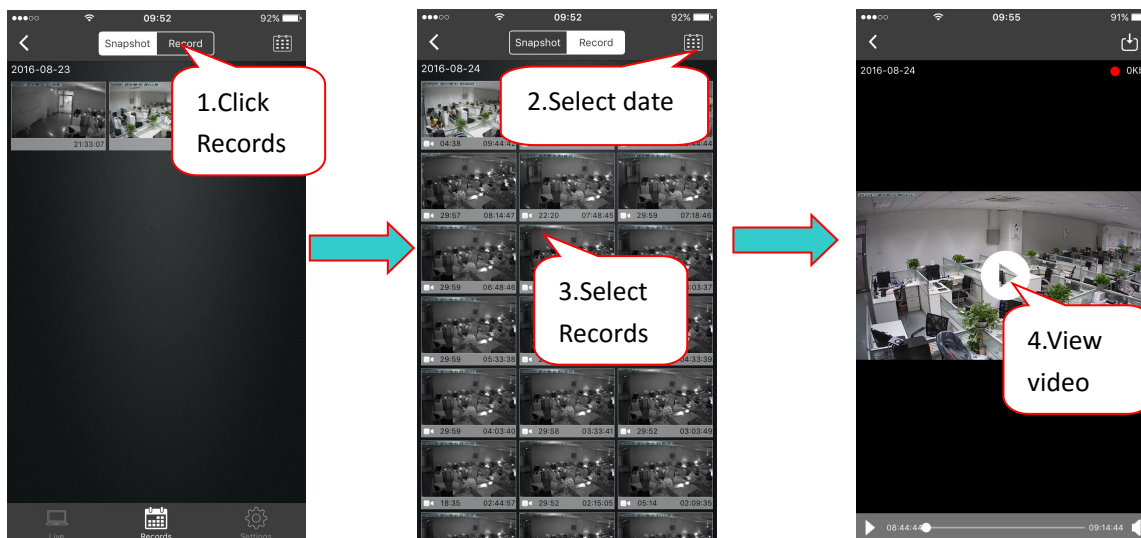
Zoom :Zoom is accomplish two fingers touching the screen as if to pinch.Move two touching fingers apart to zoom in;Move two fingers together to zoom out.



7.6 Records

Micro SD card stores the snapshot and record .





7.7 Settings

This section shows the configuration of the IP Camera.

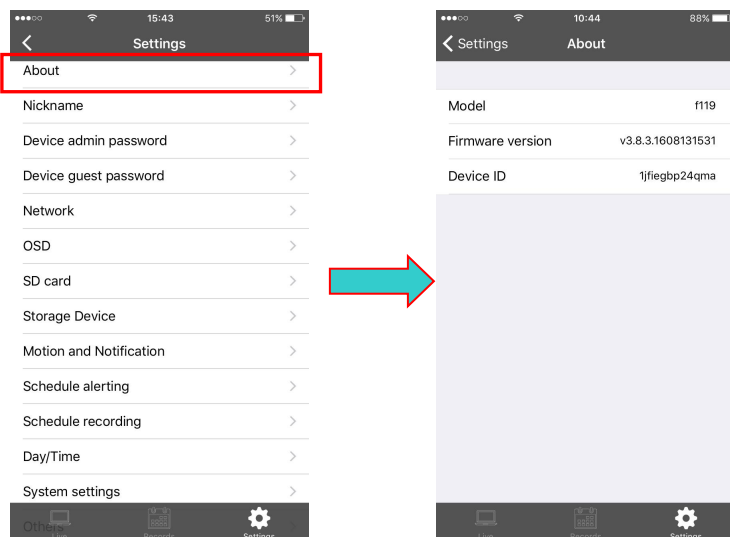
7.7.1 About

Basic information about the camera is displayed.

Model: The camera version number.

Firmware version: watch current video cameras firmware version number.

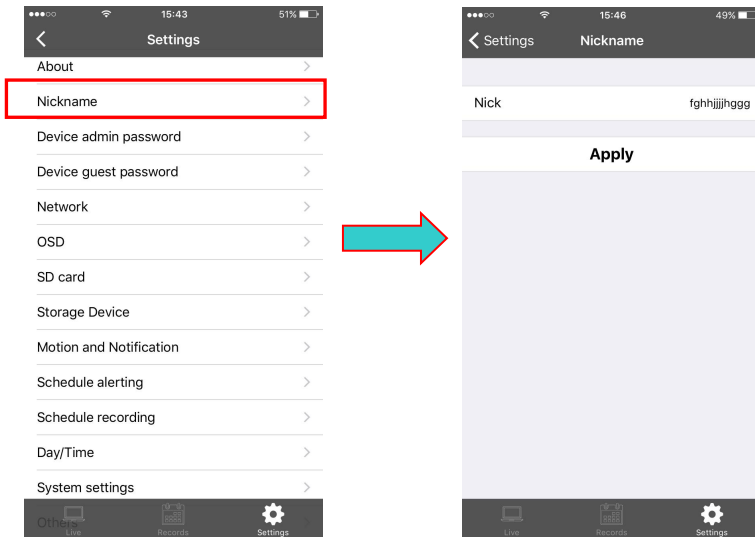
Device ID: camera ID.



7.7.2 Nickname

Modify the current camera name.

Nickname: User can modify the name of the camera.



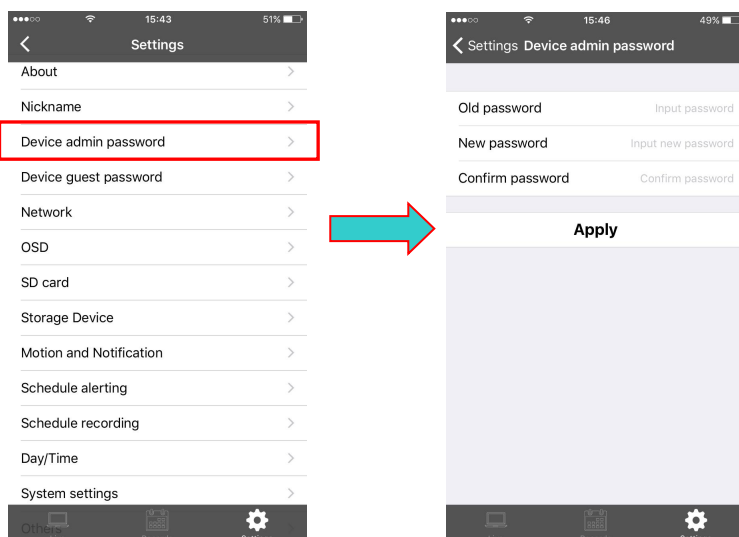
7.7.3 Device Admin Password

Admin Password: Enter the current login password (default password is admin).

New Password: Enter the new admin password.(To protect your privacy, please change the initial password after logging. Please keep the user name and password.)

Confirm new password: Re-enter the current camera modified login password.

Click "Apply" to save your changes.



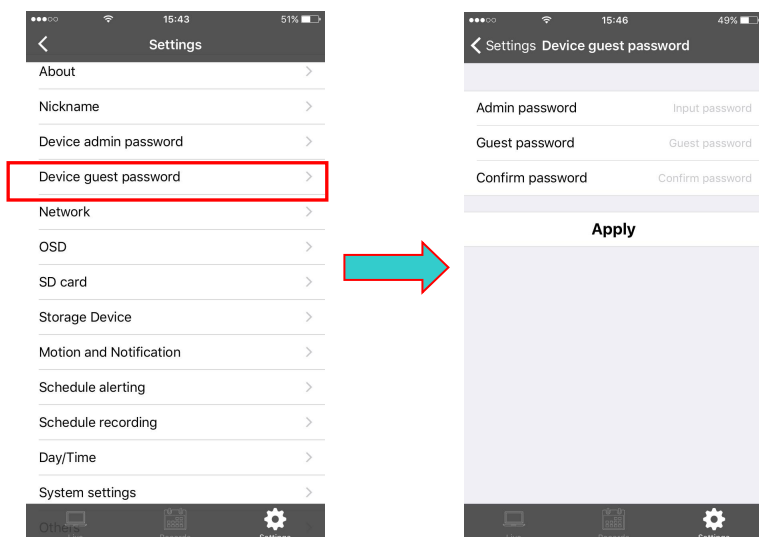
7.7.4 Device Guest Password

Admin Password: Enter the administrator password of the current camera.

Guest Password: Enter guest password (Default password is admin).

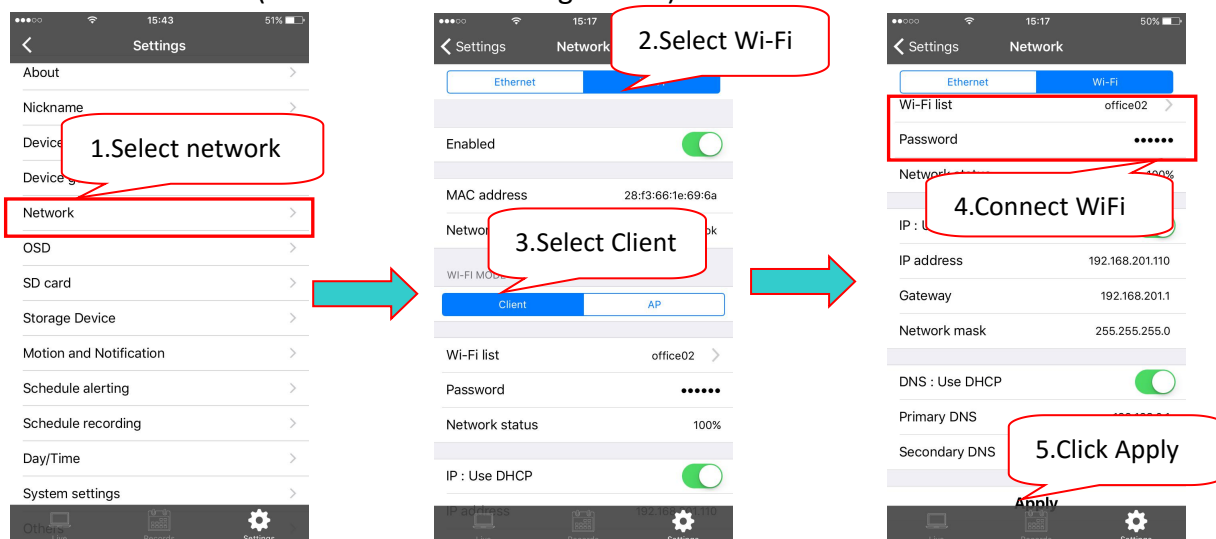
Confirm new password: Re-enter the new guest password again.

Click "Apply" to save your changes.

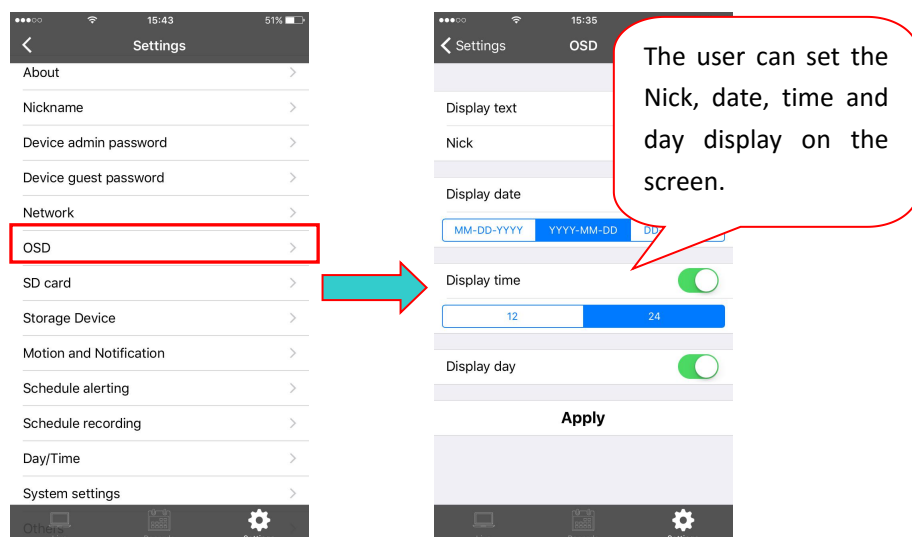


7.7.5 Network

Wireless Network: (wireless network configuration)

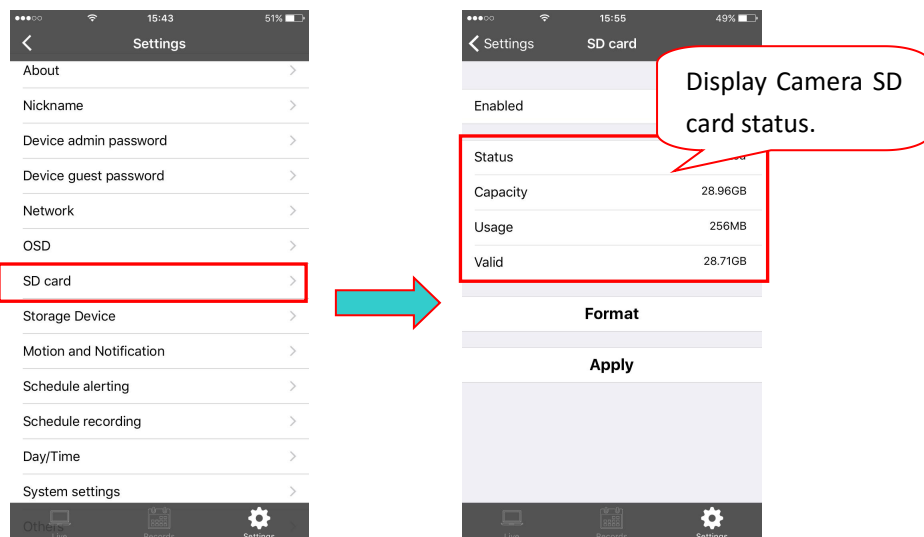


7.7.6 OSD

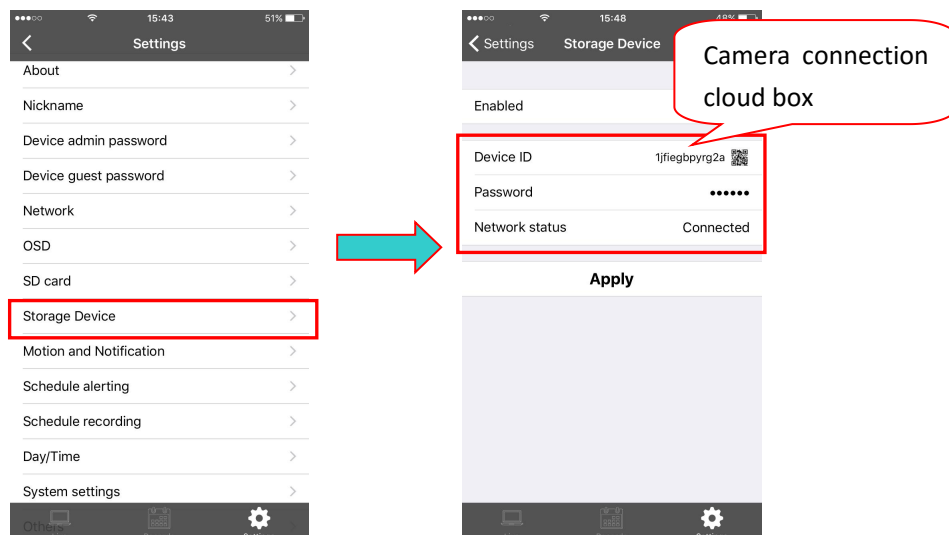


7.7.7 SD card

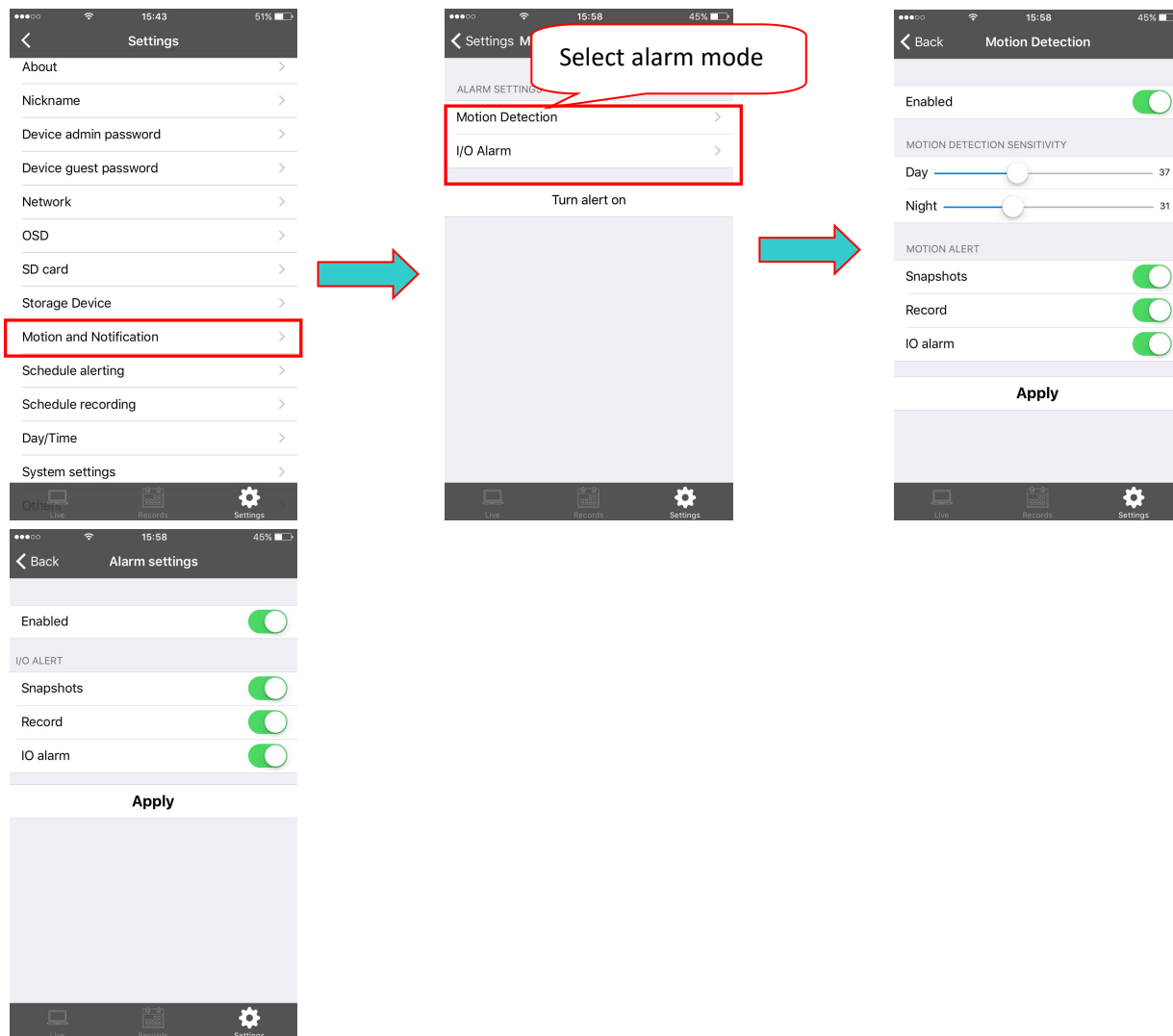
Format: The Micro SD (T-FLASH) card is formatted; the existing micro SD card contents will be cleared.



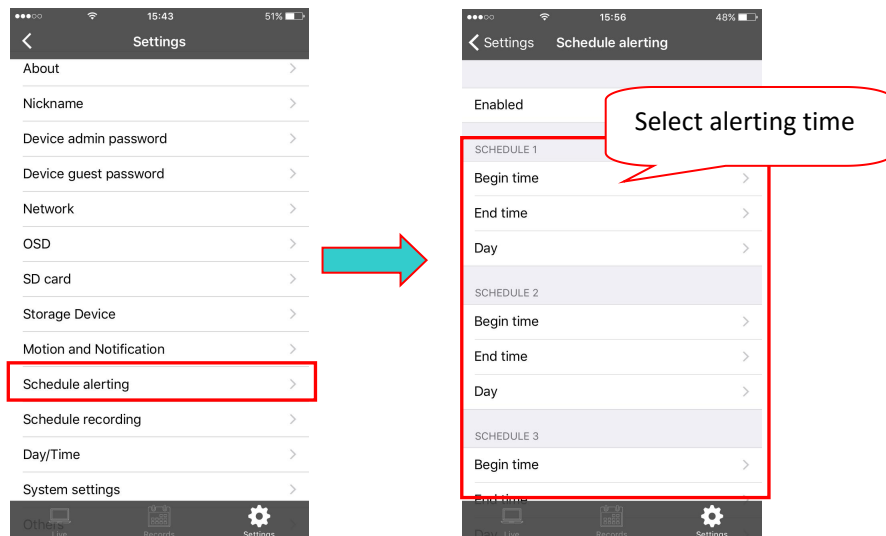
7.7.8 Storage Device



7.7.9 Motion and Notification



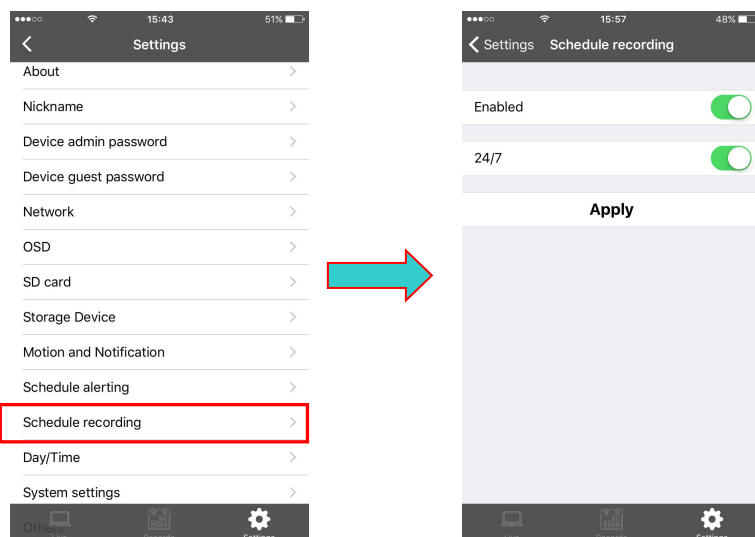
7.7.10 Scheduled alerting



7.7.11 Scheduled recording

In this option you can choose the 7* 24 hour video or scheduled recording.

Note: video files will be stored in SD card, when content is full, it will overridden.



7.7.12 Date / Time

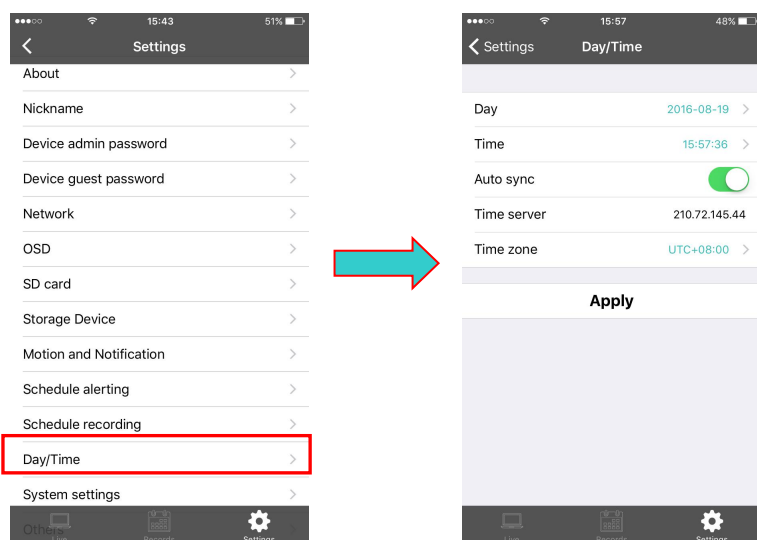
Date: When “time server automatically” turned off, users can manually modify the cam’s date.

Time: When "time server automatically" turned off, users can manually modify the camera’s time.

Time Server address: Users can manually enter in the online search to fill the local country time zone server address (default time server address is China time).

Time zone: Users can choose the time zone of the camera.

Click “Apply” to save your changes.

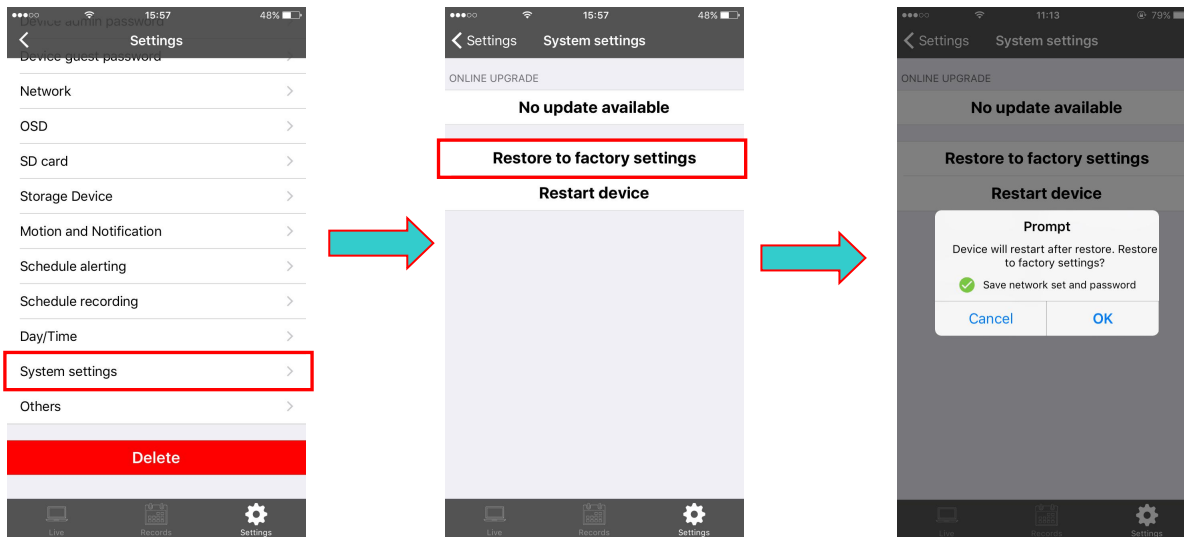


7.7.13 System

Online Upgrade: If you have the latest software, there will be tips <Update> click update, the camera will be online software upgrade, after the upgrade is successful will re-start the Camera.

Restore the factory settings: The user can click the "Restore" button, will pop up on the right Diagram tips. to factory settings back, equivalent to click the RESET button.

Restart device: Click the reset button after the restart of the camera.



7.7.14 Others

Speaker: Set the size of the camera's speaker sound, use the mouse to drag the slider to set, the greater the value, the greater the sound from the speaker.

Mic: Sets the camera microphone sensitivity, drag the slider with the mouse settings, the greater the value, the more sensitive the microphone receiving sound external environment more, the computer listens to the voice of the larger end, the corresponding listening to ambient noise is greater.

Flip: To turn upside down.

Power Frequency: 50Hz and 60Hz with two frequencies selected the user machine installation area under power frequency to choose.

Click Apply to save your changes.

