

# Wireless IP Camera

---

## User Manual for PC Client

Note: To protect your privacy, please change the initial password after login. Please keep your user name and password safely.

# Contents

|   |    |
|---|----|
| 1. Introduction.....                    | 1  |
| 2. Installation.....                    | 1  |
| 2.1. Camera installation and Login..... | 1  |
| Step 1: Connect power and network.....  | 1  |
| Step 2: Download the PC client.....     | 1  |
| Step 3: Login.....                      | 4  |
| 3. Homepage.....                        | 5  |
| 3.1 Add Camera Wizard.....              | 5  |
| 3.2 Camera status.....                  | 8  |
| 3.3 Account settings.....               | 8  |
| 3.4 Image settings and PTZ control..... | 9  |
| 3.5 Mode selections.....                | 10 |
| 3.6 Button page.....                    | 10 |
| 3.7. Playback.....                      | 11 |
| 4. Information.....                     | 12 |
| 4.1 Alarm Information Checking.....     | 12 |
| 5. Settings.....                        | 13 |
| 5.1 About.....                          | 13 |
| 5.2 Nickname.....                       | 14 |
| 5.3 Admin Password.....                 | 14 |
| 5.4 Guest Password.....                 | 15 |
| 5.5 Network.....                        | 15 |
| 5.6 OSD.....                            | 18 |
| 5.7 SD card:.....                       | 19 |
| 5.8 Storage Device:.....                | 20 |
| 5.9 Motion sensitivity:.....            | 20 |
| 5.10 Motion detection:.....             | 21 |
| 5.11 Scheduled recording:.....          | 22 |
| 5.12 Date / Time:.....                  | 22 |
| 5.13 System:.....                       | 23 |
| 5.14 Other:.....                        | 24 |
| 6. Troubleshooting.....                 | 25 |
| 7. Wireless Infrastructure.....         | 30 |

# 1. Introduction

Thanks for buying our products. Cloud IP camera has a variety of functions, which dedicates to the office and home solutions. Unlike traditional IP Camera, cloud camera uses P2P technology, plug and play (no need to do port forwarding, DNS, or IP address setting). By using WIFI/3G remote monitoring , Cloud Camera realizes real-time control at any where and any time. 720P HD makes image clear and smooth. Cloud IP camera also has motion detection function, making it cost-effective for home and public places security.

This manual is only for reference, any update please open [www.mipcm.com](http://www.mipcm.com) to download newest manual version.

## 2. Installation

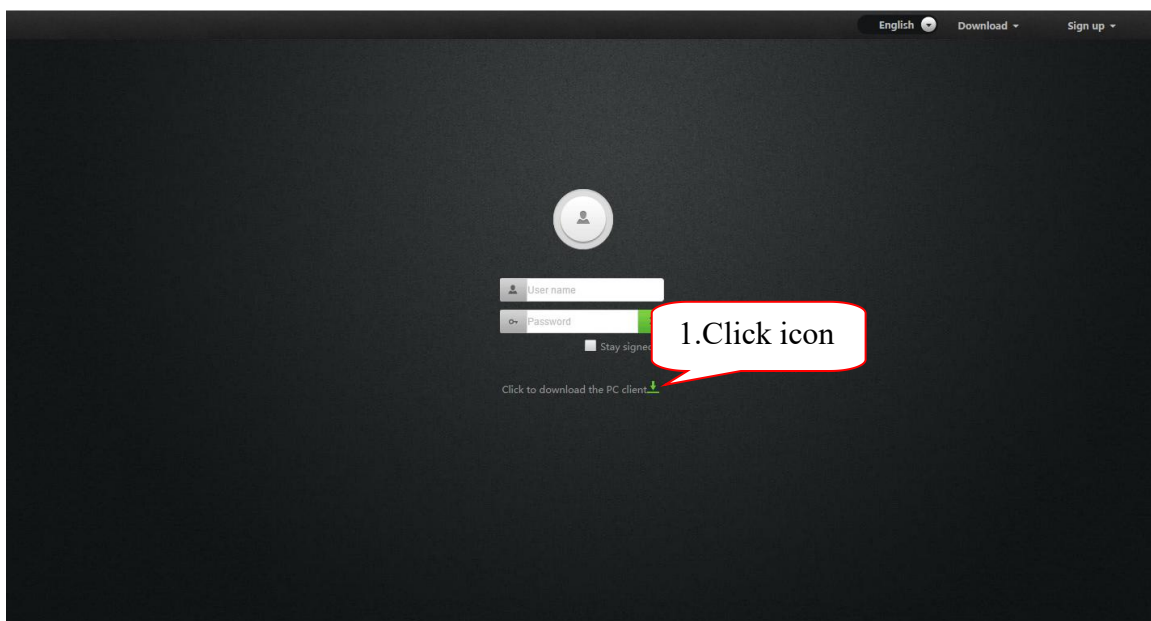
### 2.1. Camera installation and Login

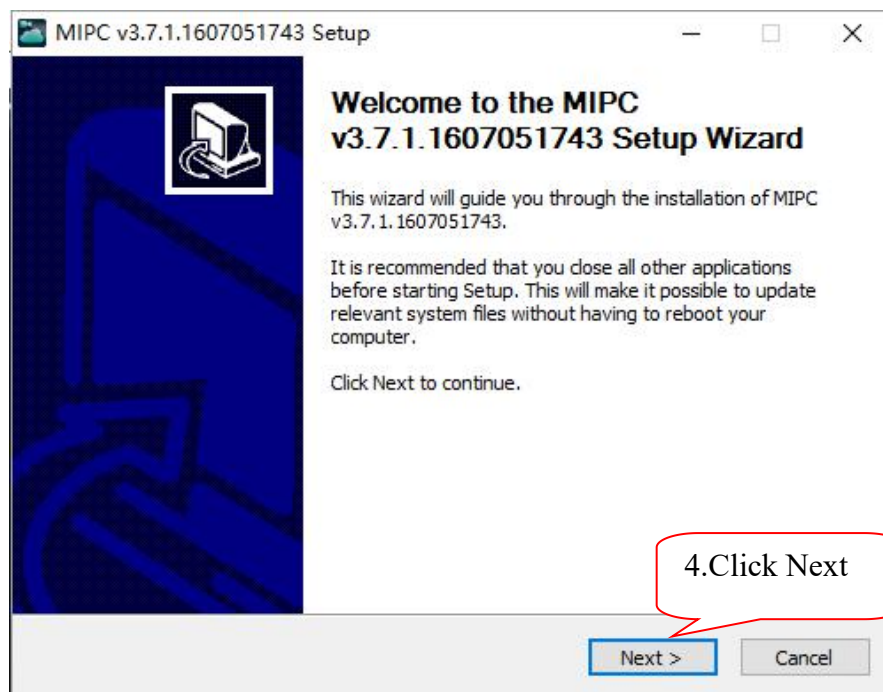
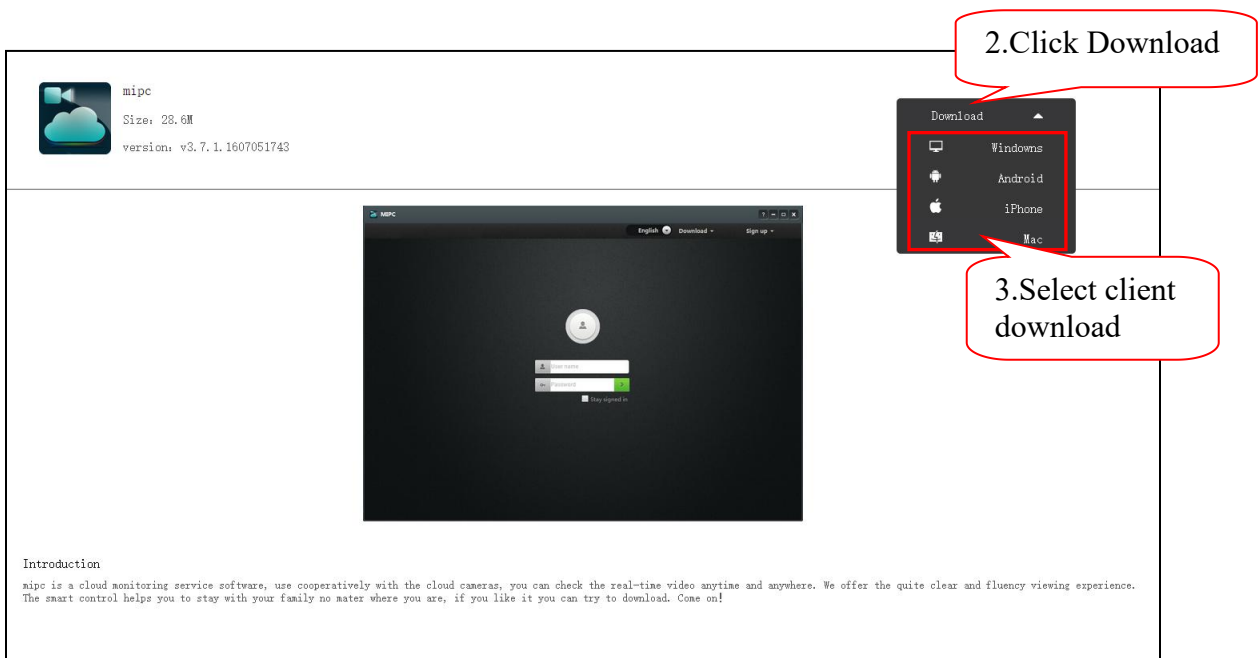
#### Step 1: Connect power and network

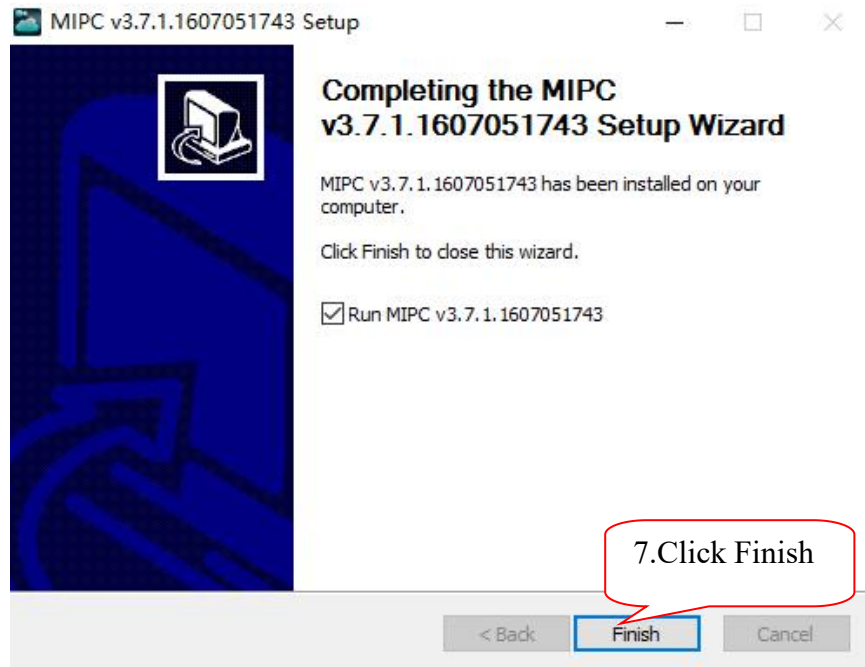
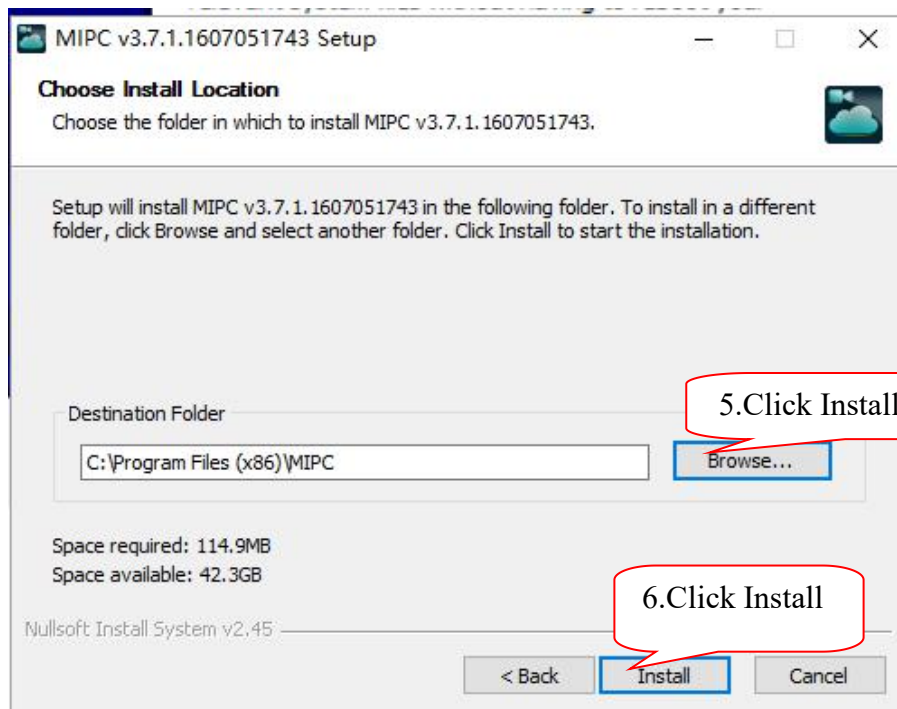
Please refer to "Quick Installation Guide" for installation

#### Step 2: Download the PC client

Open [www.mipcm.com](http://www.mipcm.com) on browser

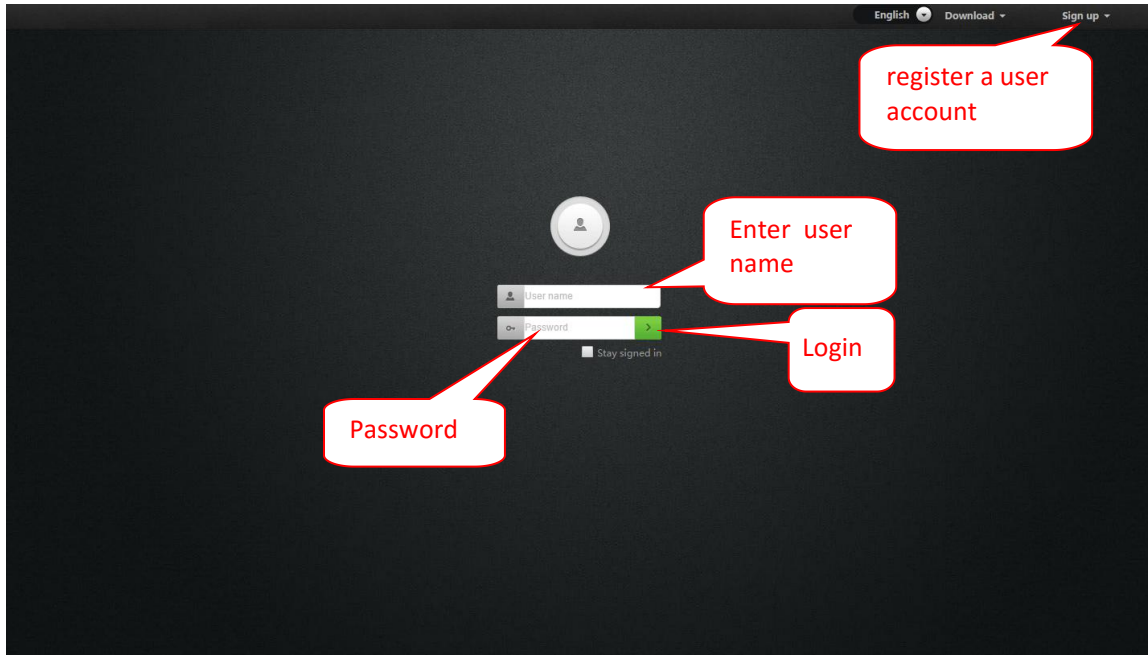




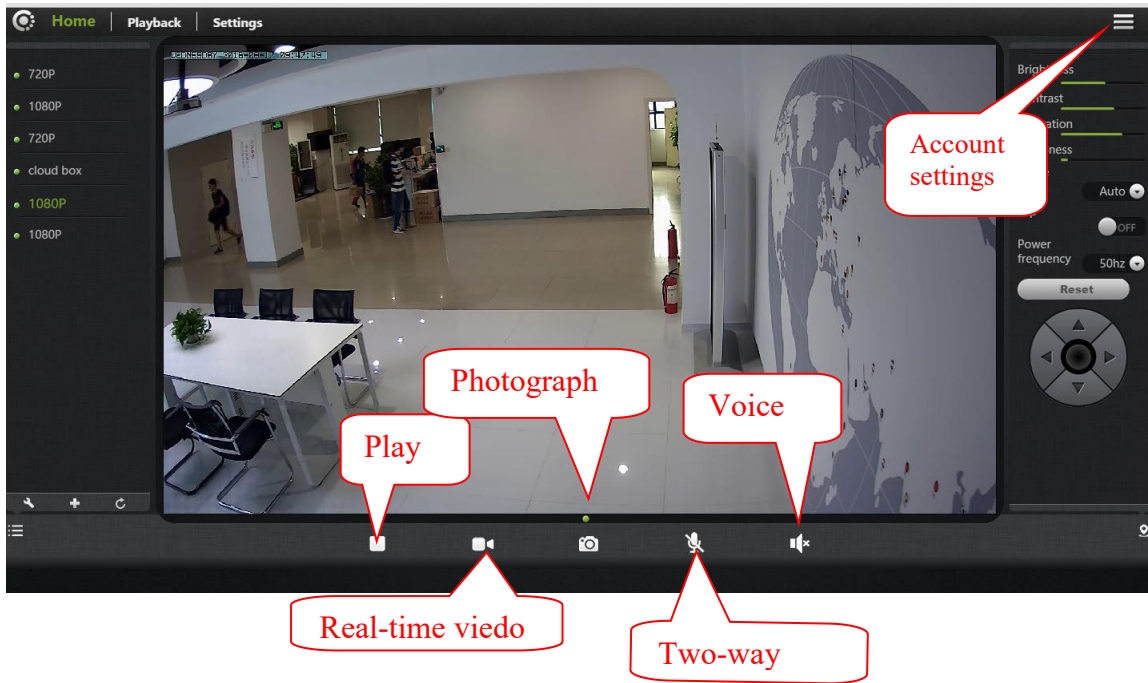


### Step 3: Login

1: Open PC MIPC client and put in user name and password .(You can click on the login screen of the "Sign up" button to register a user account)



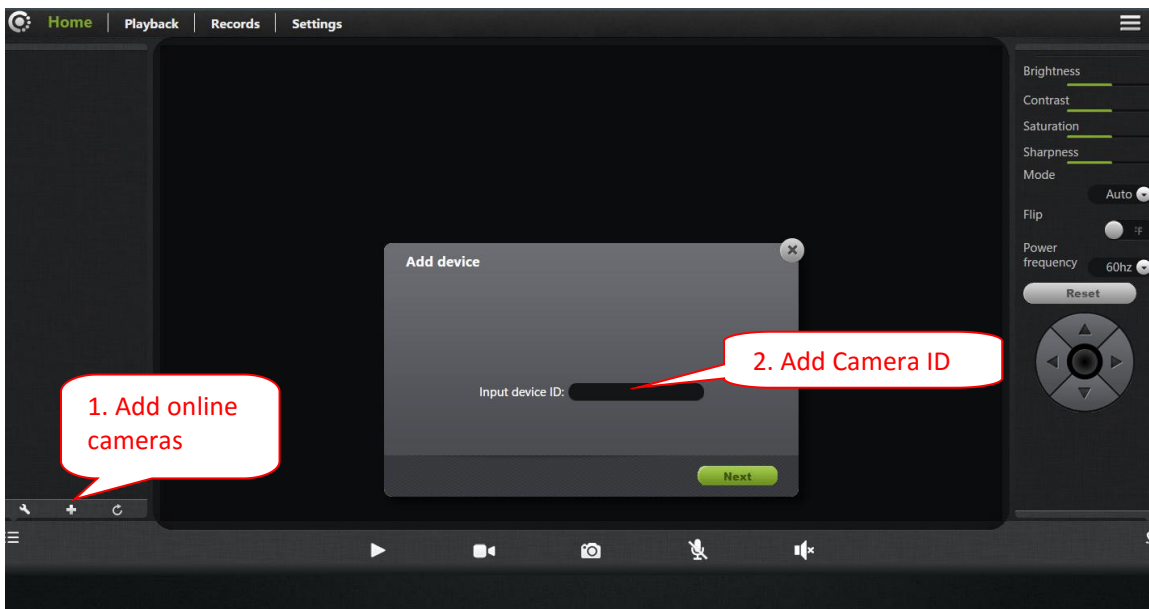
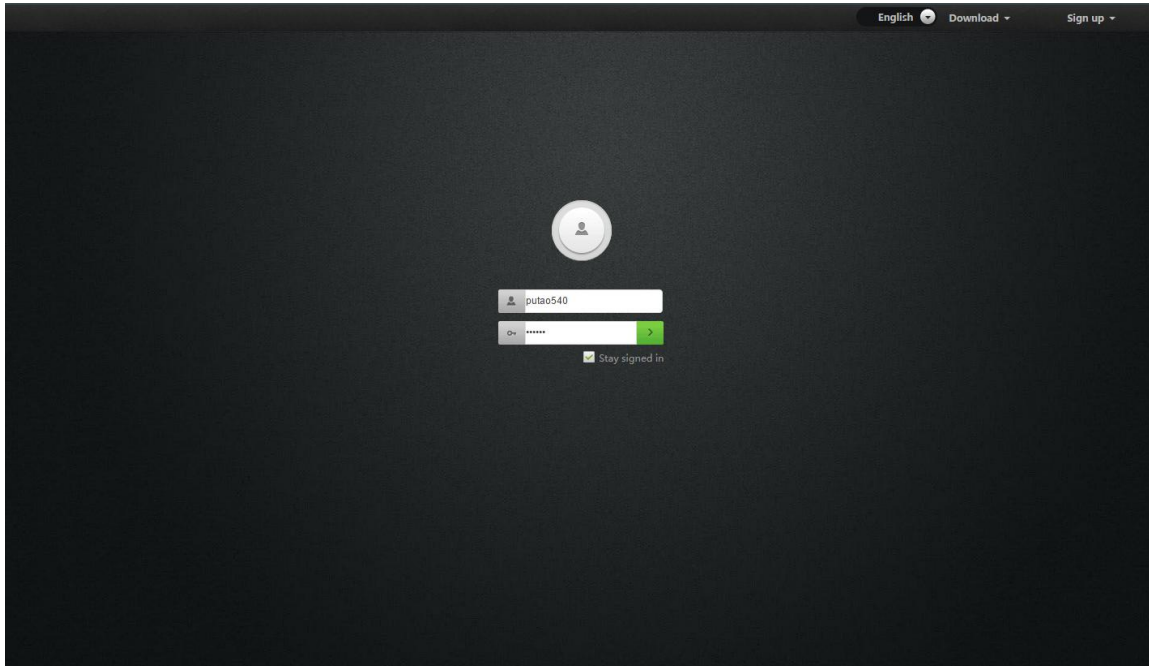
2: On the video viewing screen.

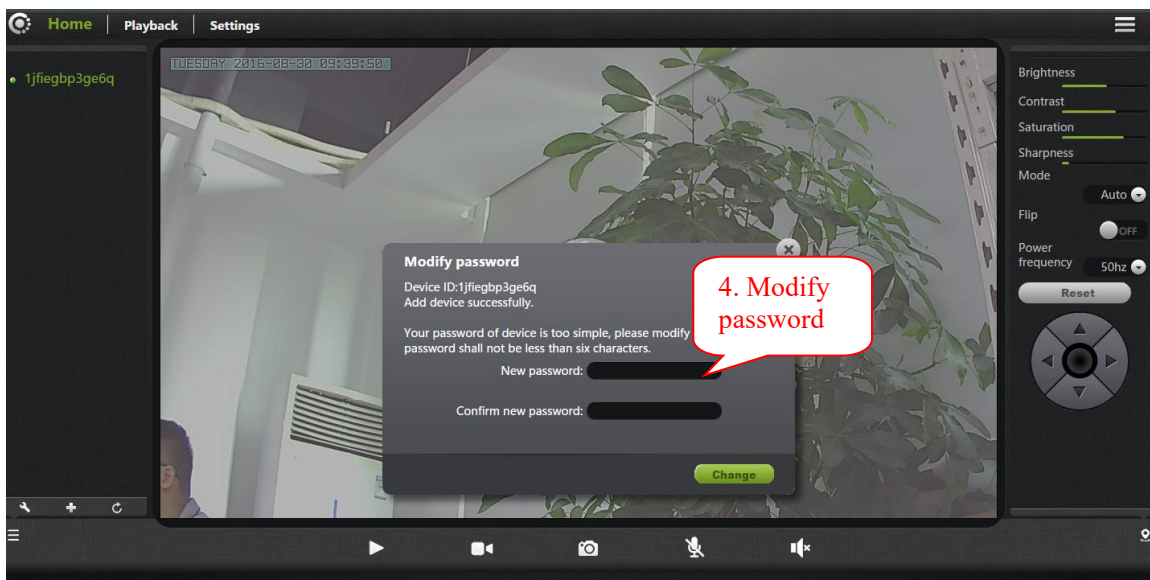
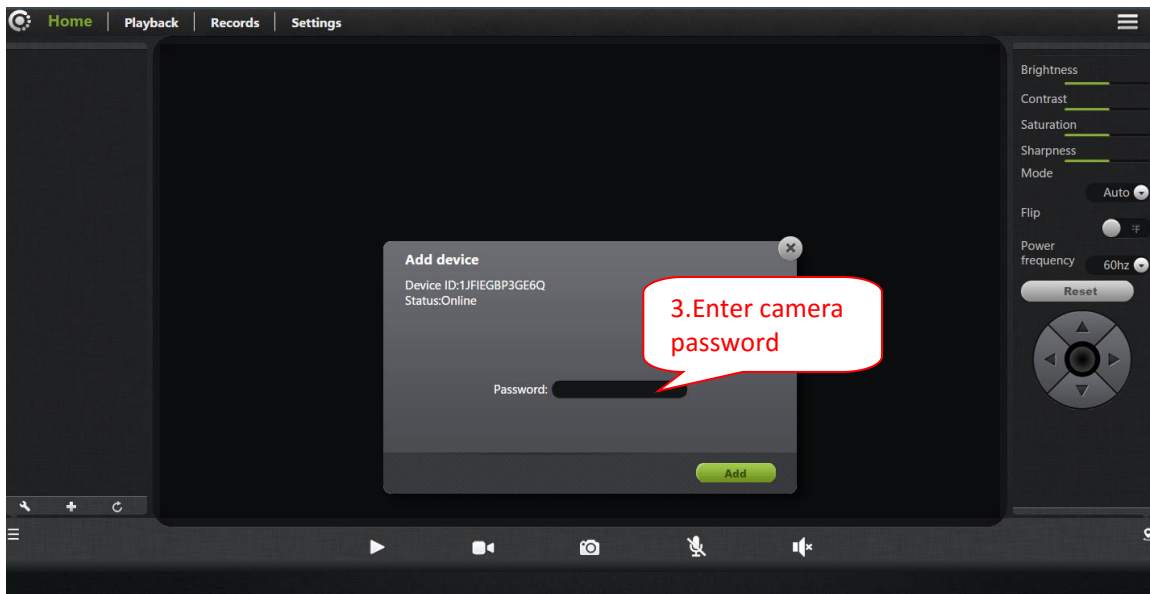


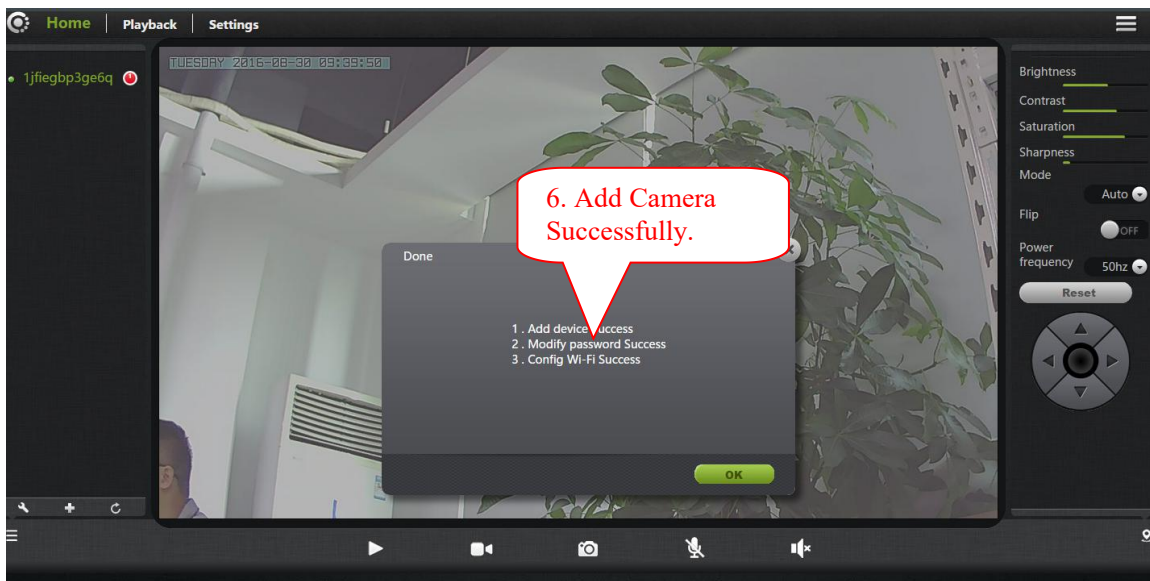
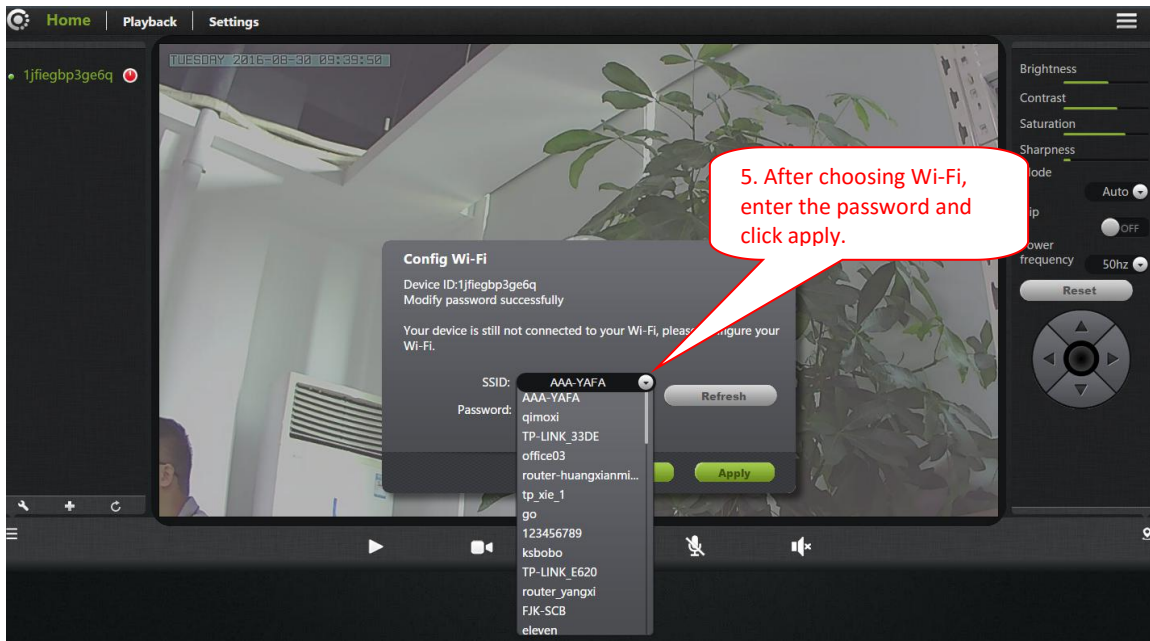
## 3. Homepage

### 3.1 Add Camera Wizard

After registered users login, the user can add, delete and manage multiple cameras.







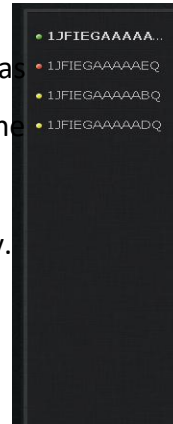
Attention: 1. the 4th step is based on the Cam's initial password, if the initial password is not "admin", this step can be cancelled.

2. The 5th step, after choosing Wi-Fi and enter password, when applying, please check the (📶) light flashing status. Before pulling the cable please make sure the (📶) flash 3 times for every 3 seconds.


### 3.2 Camera status

1. You can see the online status of every camera you added, which can be divided into 3 statuses.


- Green color indicates that your camera is online.
- Yellow color means the camera online; however, password has been changed. You need to enter the new password to access the camera.
- Red indicates the camera is offline and not able to access remotely.




If the camera is offline, please try the following methods:

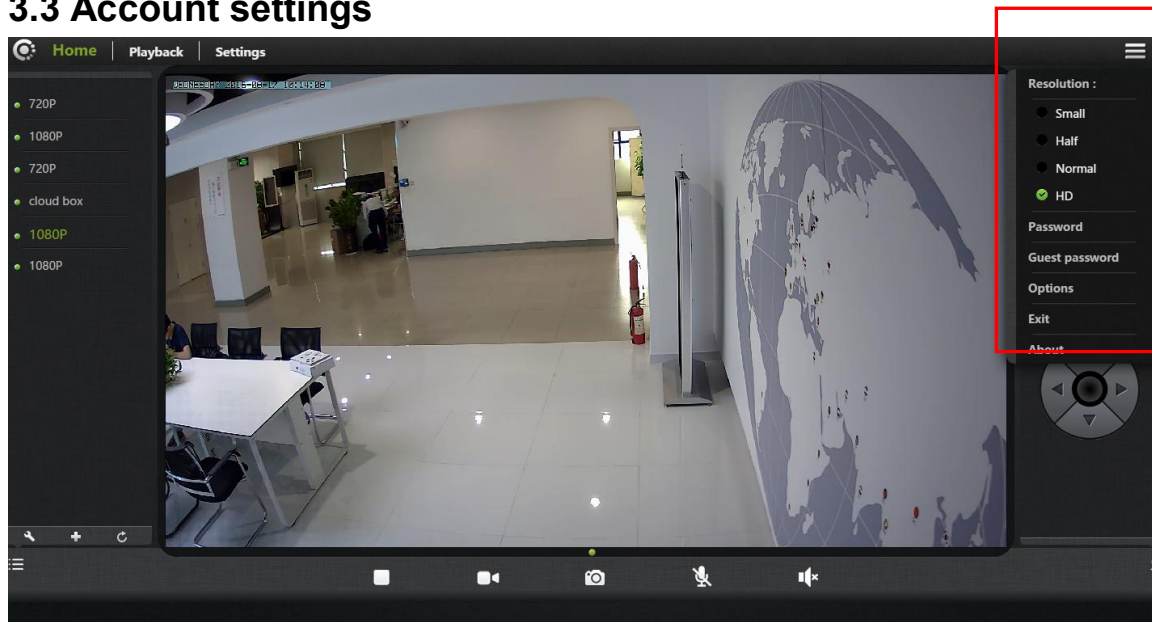
- Make sure the camera's network connection is normal.
- Try to restart your network router.
- Please check the camera's cable connections to ensure they are connected.
- Make sure the camera STATE2 (  ) the green light flashes every 3 times every 3 seconds.

If you still can not access your camera, please restart the camera or press the RESET shortly backing to the factory settings.

2. : Add or delete online cameras.

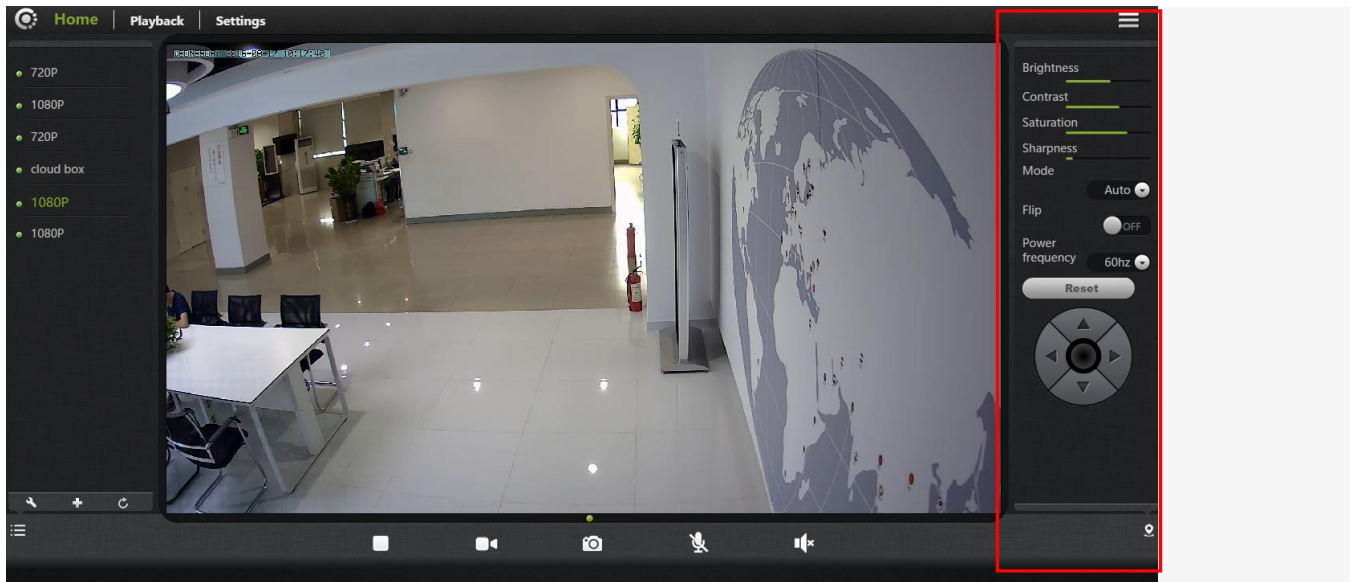
3. : Show or hide the status bar.




### 3.3 Account settings



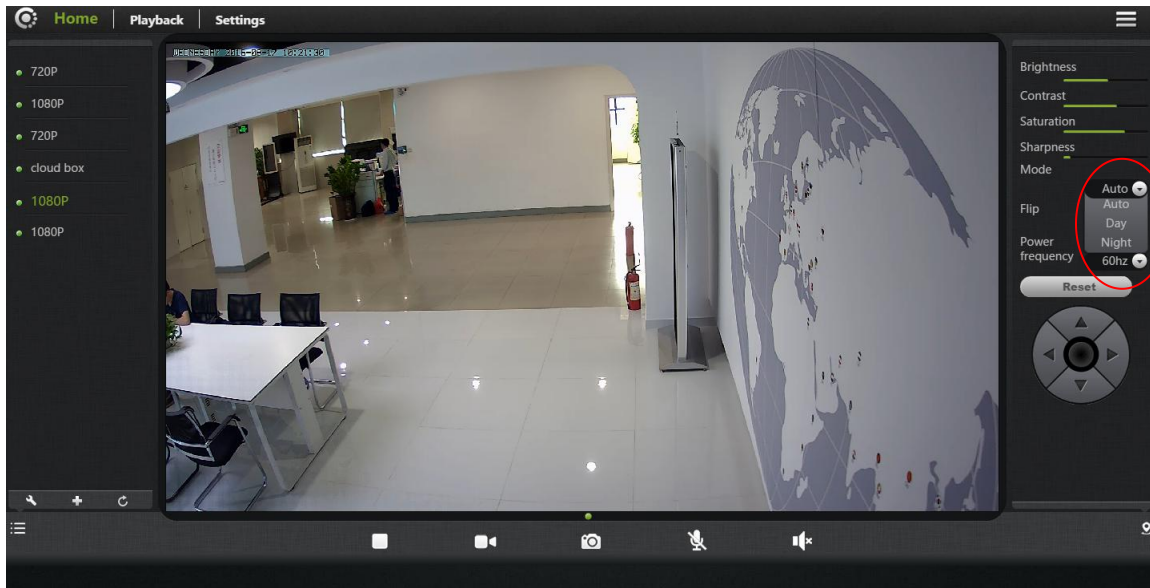
- 1、 **Resolution:** User can choose the resolution of the images.
- 2、 **Password:** User can modify the admin account (The visitors login the account by administrator password can modify the information of the account).
- 3、 **Guest Password:** The visitors who login the account by guest password can only watch and rotating screen, which can't modify the information of the account.
- 4、 **Exit:** Exit Video Interface.

### 3.4 Image settings and PTZ control



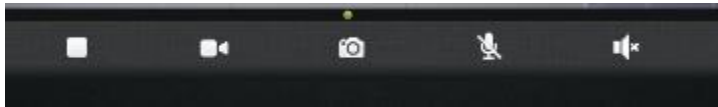
1. **Brightness / Contrast / Saturation / Sharpness:** video images can adjust the parameters of the corresponding (Such as the right to adjust these parameters will result in poor image quality display we may not recommend users adjust of these parameters).
2. : Click "Reset", you can restore brightness / contrast / saturation / sharpness back to the factory settings.
3. : IP CAM can control PTZ up / down / left / right rotation.
4. : Display and hide the status bar icons.
5. **Machine Turnover:** When the machine is hosting, the picture is turnover, when choosing Machine Turnover, the picture will turn back.
6. **Supply frequency:** Please choose the right Supply frequency based on the local area. (China rated frequency is 50Hz).







### 3.5 Mode selections



- 1.**auto.:** Infrared lamp's on and off is based on the environment around the photosensitive sensor.
- 2.**Day:** IP camera is switch into daytime mode, infrared lamp is off.
- 3.**Night:** IP camera is switch into night mode, infrared lamp is on.

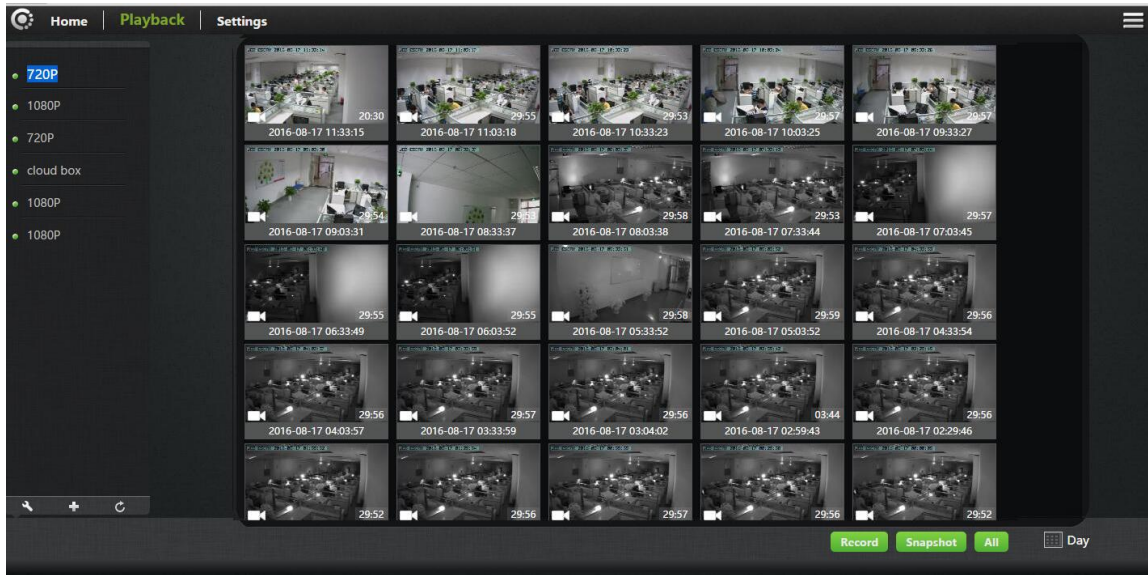
### 3.6 Button page



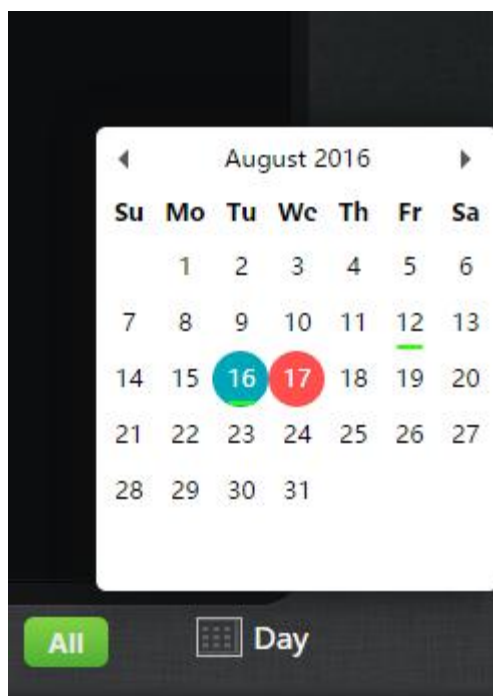
1.  **Video Play / Stop:** Click buttons to play or stop the video.
2.  **Temporary manual recording button (the file recorded to micro SD card):** Click the buttons on the audio / video recording, recording icon indicates  .NOTE: This video button function applies only to temporary manually recording.
3.  **Snapshot button:** Click the button for playing video capture pictures.
4.  **Two-way audio:** Speak when pressing the two-way audio button.
5.  **Voice:** Turn on the mic and speaker then speak .

### 3.7. Playback

Micro SD card stores the record and snapshot.

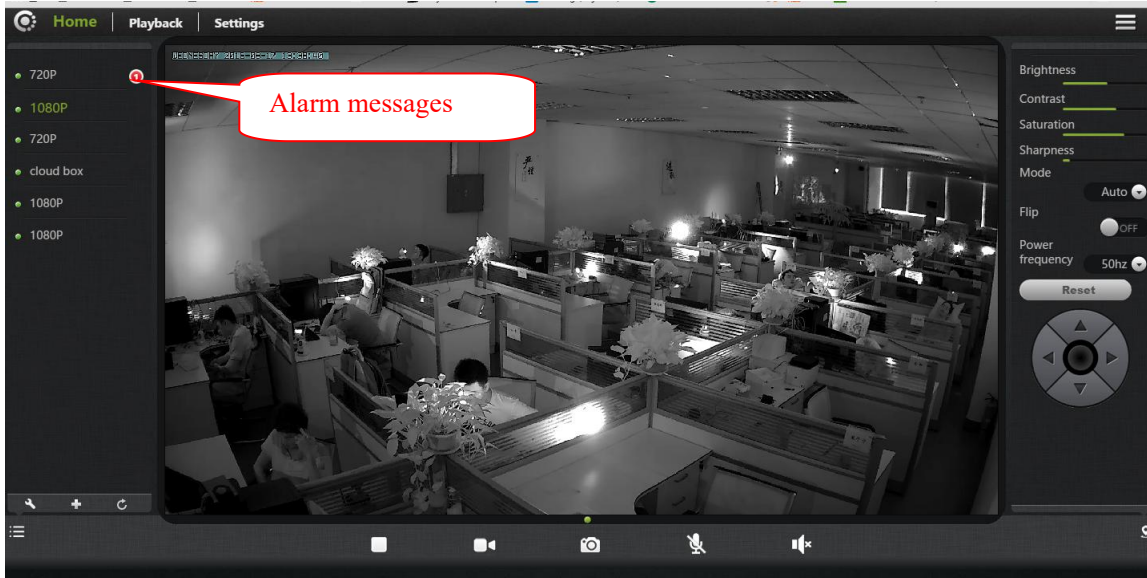


1. Select the camera in the camera list.
2. Click on the top right corner playback button.
3. In the image In the lower right corner can find more information. Video files and file details.



## 4. Information

### 4.1 Alarm Information Checking



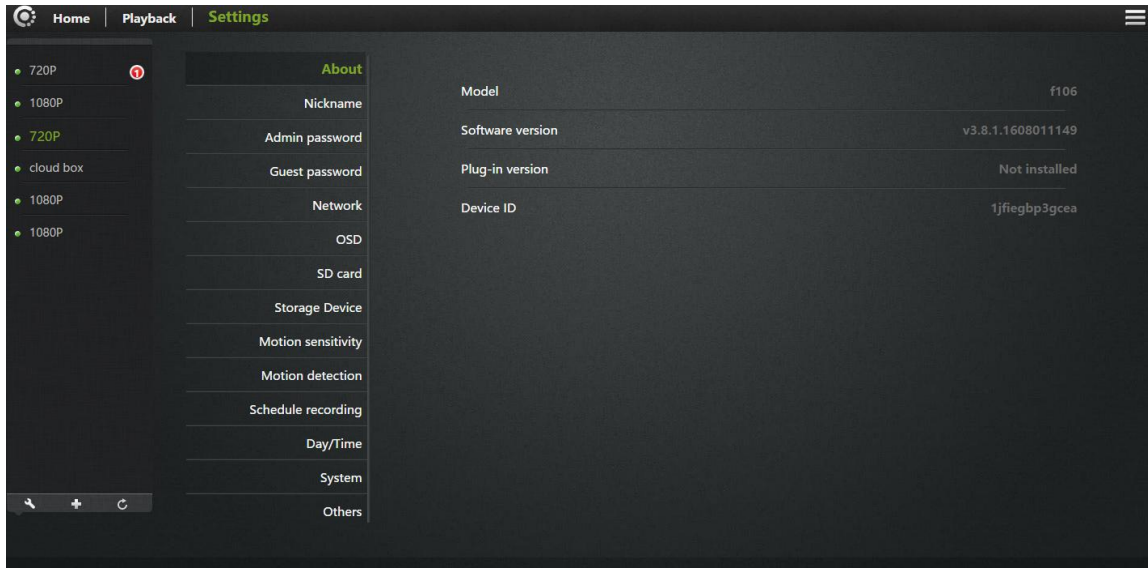
|           | 12341 | 2016-08-17 13:56:24 | Alarm  |  |
|-----------|-------|---------------------|--------|--|
| 720P      | 12340 | 2016-08-17 13:51:53 | Record |  |
| 1080P     | 12339 | 2016-08-17 13:51:45 | Alarm  |  |
| 720P      | 12338 | 2016-08-17 13:51:36 | Alarm  |  |
| cloud box | 12337 | 2016-08-17 13:51:34 | Alarm  |  |
| 1080P     | 12336 | 2016-08-17 13:50:36 | Record |  |
| 1080P     | 12335 | 2016-08-17 13:50:28 | Alarm  |  |
|           | 12334 | 2016-08-17 13:50:19 | Alarm  |  |
|           | 12333 | 2016-08-17 13:50:12 | Alarm  |  |
|           | 12332 | 2016-08-17 13:47:58 | Record |  |
|           | 12331 | 2016-08-17 13:47:49 | Alarm  |  |
|           | 12330 | 2016-08-17 13:47:41 | Alarm  |  |
|           | 12329 | 2016-08-17 13:47:35 | Alarm  |  |
|           | 12328 | 2016-08-17 13:47:30 | Record |  |
|           | 12327 | 2016-08-17 13:47:21 | Alarm  |  |

## 5. Settings

This section shows the configuration of the IP Camera.

### 5.1 About

Basic information about the camera is displayed.



**Model:** The camera version number.

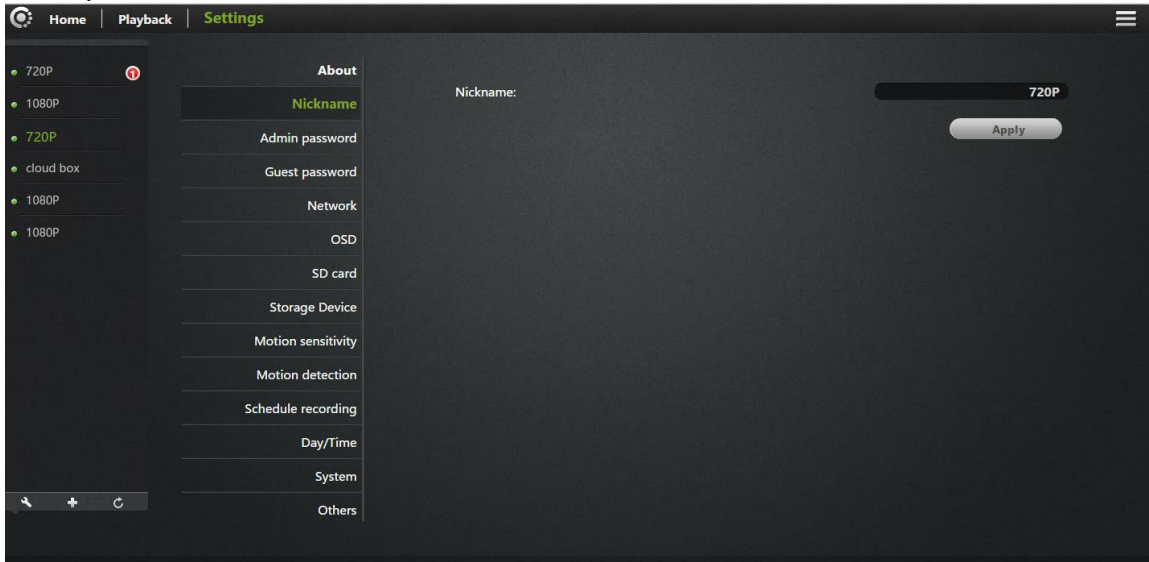
**Software Version:** Camera current software version number.

**Plug-in version:** watch current video cameras plug-in version number.

**Device ID:** camera ID.

## 5.2 Nickname

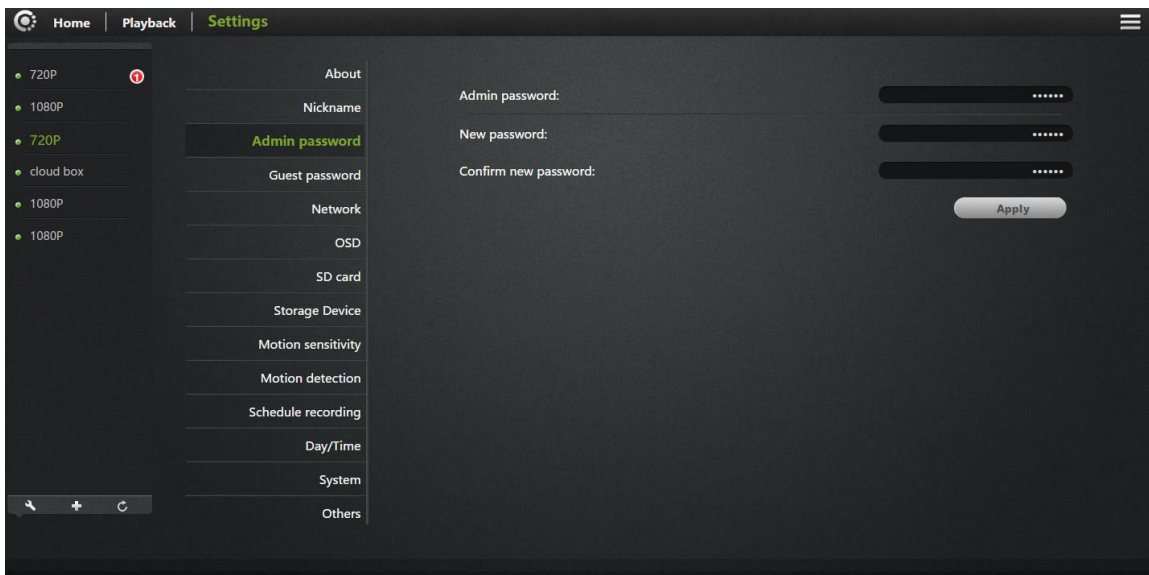
Modify the current camera name.



Nickname:

User can modify the name of the camera.

## 5.3 Admin Password



**Admin Password:** Enter the current login password (default password is admin).

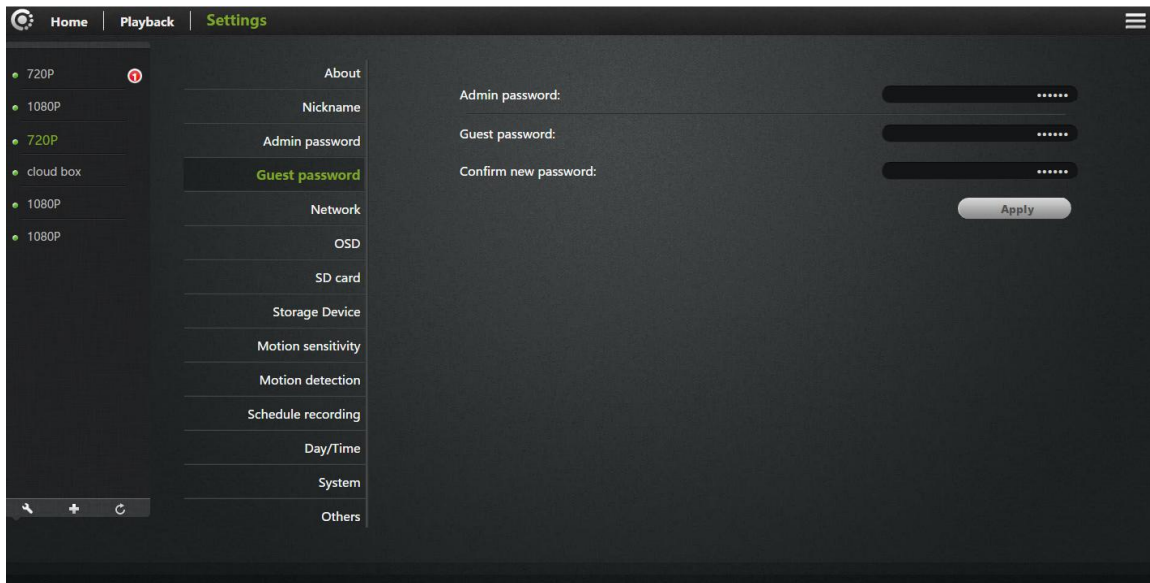
**New Password:** Enter the new admin password.

(To protect your privacy, please change the initial password after logging. Please keep the user name and password.)

**Confirm new password:** Re-enter the current camera modified login password.

Click "Apply" to save your changes.

## 5.4 Guest Password



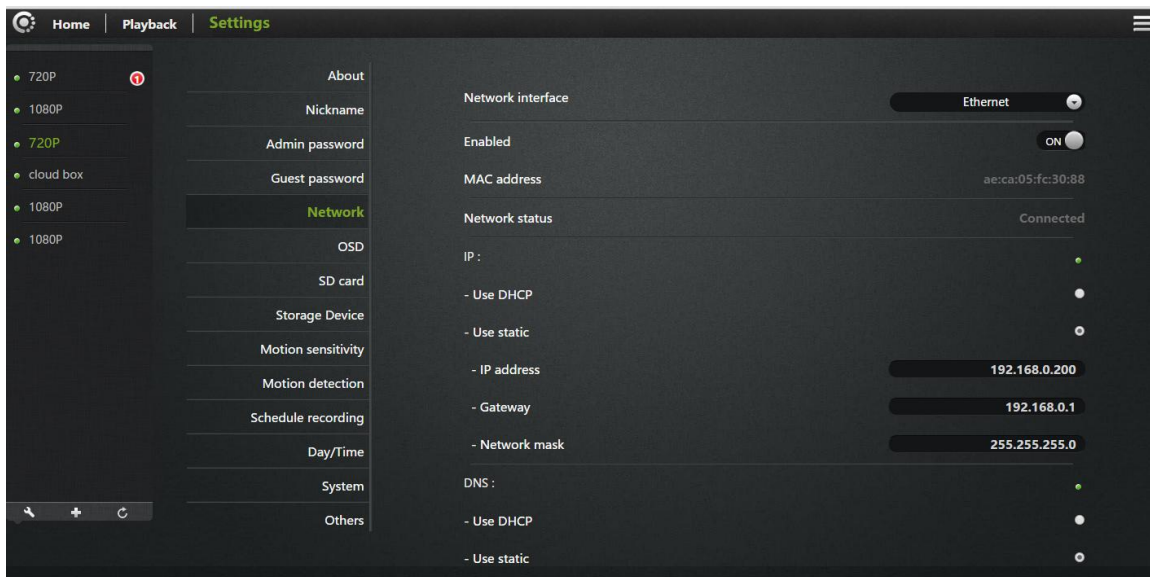
**Admin Password:** Enter the administrator password of the current camera.

**Guest Password:** Enter guest password (Default password is admin).

**Confirm new password:** Re-enter the new guest password again.

Click "Apply" to save your changes.

## 5.5 Network



## NIC: Ethernet (wired) or wireless networks.

### 1. Ethernet:

**Effective when connected to a wired network.**

**Start Status:** The current Ethernet situation is enable or disable.

**Mac Address:** The current Ethernet Mac address.

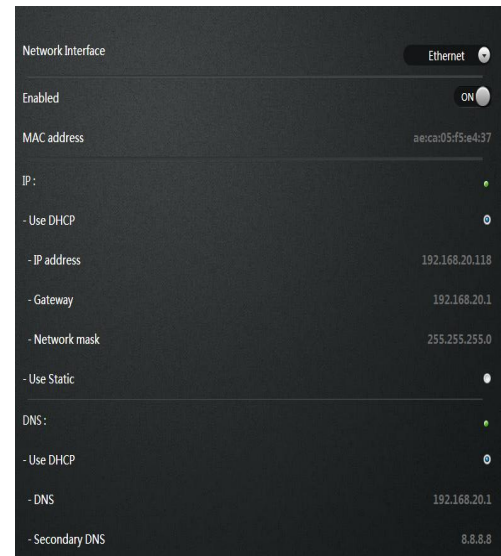
**Automatically obtain an IP address (cameras default):** When selected, the camera

Automatically get to the router connected to it is automatically assigned to

Its associated IP address / gateway / subnet mask information

**Obtain DNS Service Address automatically:** After clicking, IP Cam will automatically obtain DNS by router.

**By using DNS server address underneath:** After clicking, the camera will manually access with DNS connected to the Cam (user may not need to set it).



### 2. Wireless Network: (wireless network configuration)

**Select the wireless network card after.**

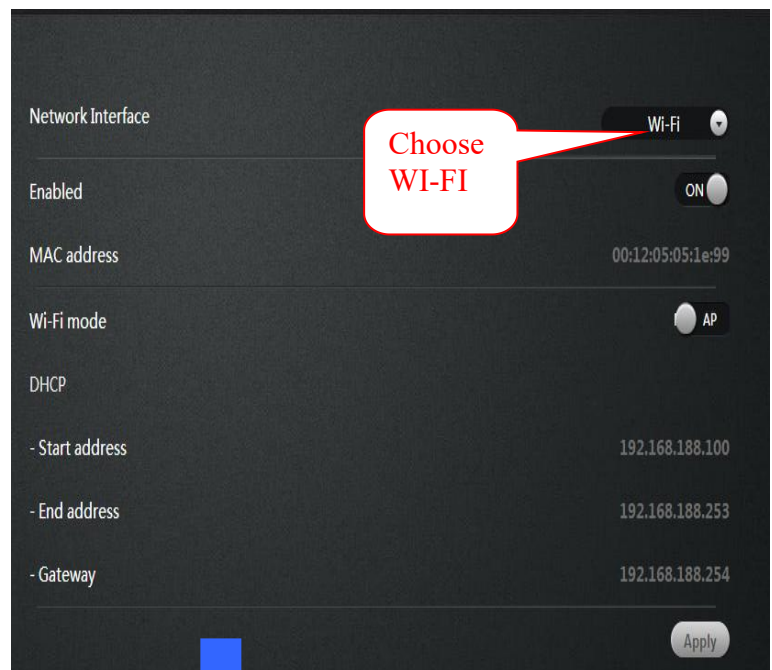
**Wireless Mode:** Hot / Terminal

**A. Hot spots:** As a searching device, the default mode is wireless hot spot. By using PC or iPhone can search the hot spot, IP cam hot spot is realize as ID number. For example: ipc1jfiiegaaaah2a.

By connected with hot spot can realize the WIFI P2P connections.

**A. Terminal:** As an searched devices, can realize network

Camera connected with WIFI router.



Note:

After setting up WIFI click Applications, WIFI

Surface does not immediately refresh the page information, the user wants to quit

"Network", and then enter, you can see no

Line connection status display: After a successful connection, IP

Address and gateway information will get to.

Meanwhile 📶 flashes green 3 times every 3 seconds.

Network Interface

Wi-Fi

Enabled ON

MAC address 00:12:05:05:1e:99

Wi-Fi mode CLIENT

Select network :

- Wifi list fujikamrd Refresh

- Wifi list unguAP2 Refresh

- Password .....

IP :

- Use DHCP

- IP address 192.168.21.18

- Gateway 192.168.21.1

- Network mask 255.255.255.0

- Use Static

DNS :

- Use DHCP

- DNS 192.168.21.1

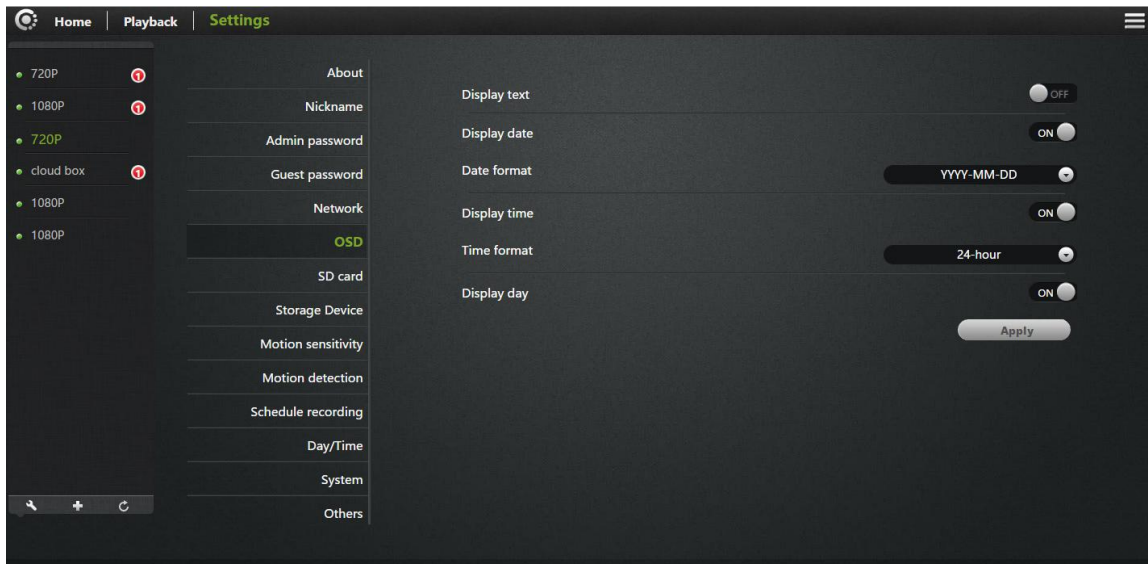
- Secondary DNS 8.8.8.8

- Use Static

Apply

## 5.6 OSD

### Menu settings



**Display text:** After tickled, the upper left corner of the screen will display the name of the camera. The user can modify the display name of the camera (Can not have Chinese or symbols, only English and numbers).

**Display date:** After tickled, upper left corner of the screen will display the date.

**Date format:** The user can select Year / Month / Day or Month / Day / Year two date formats.

**Display time:** After tickled, the screen will display the time.

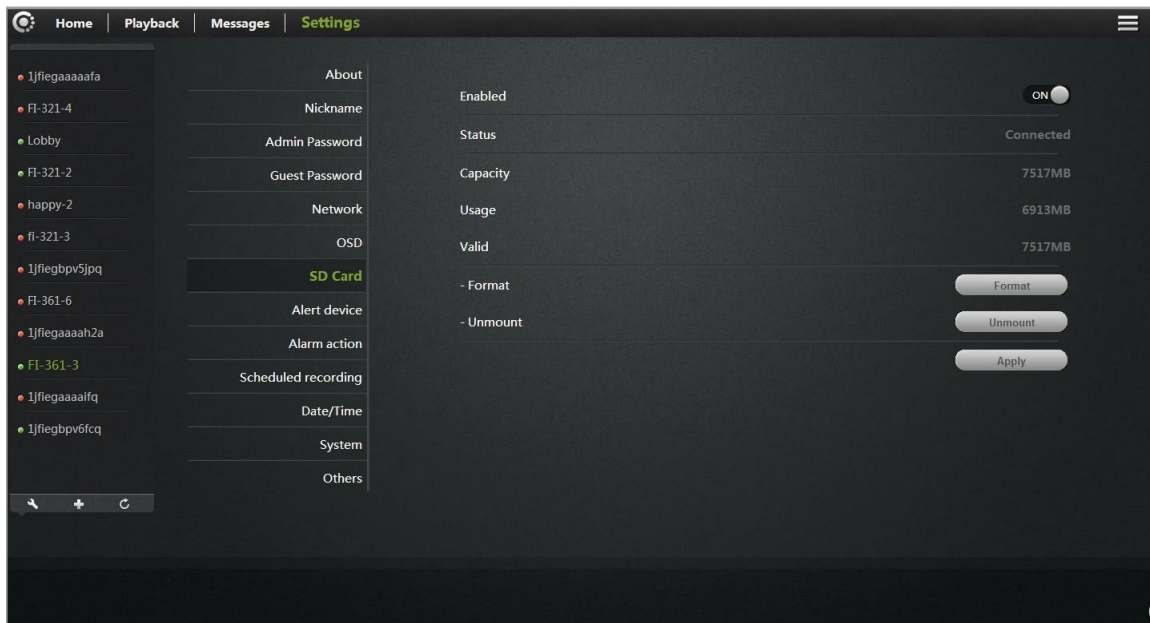
**Time format:** User selectable for 24-hour or 12-hour format clock.

**Display week:** After tickled, the screen will display weeks.

Click “Apply” to save your changes.

## 5.7 SD card:

Display Camera SD card status.



**Format:** The Micro SD (T-FLASH) card is formatted; the existing micro SD card contents will be cleared.

**Repair:** If "Playback" cannot see video file or view the alarm information, can repair the micro SD card.

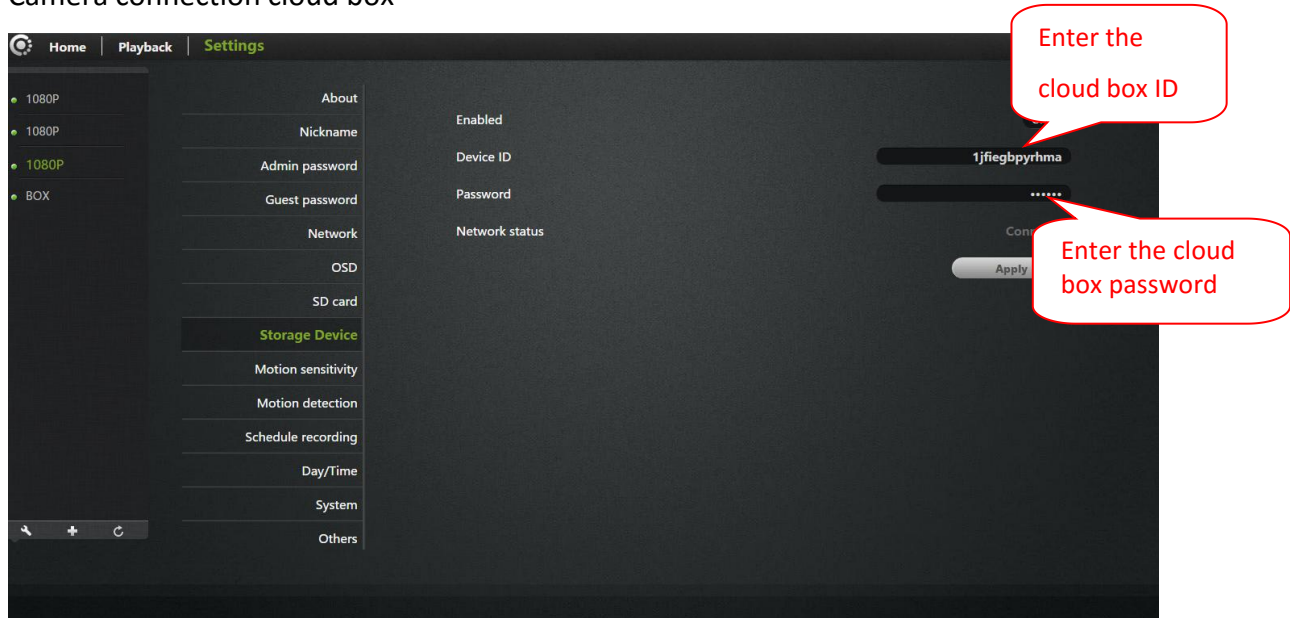
(Note: The repair function may cause part of the micro SD card contents lost)

**Uninstall:** put micro SD card from the camera release

Click Apply to save your changes.

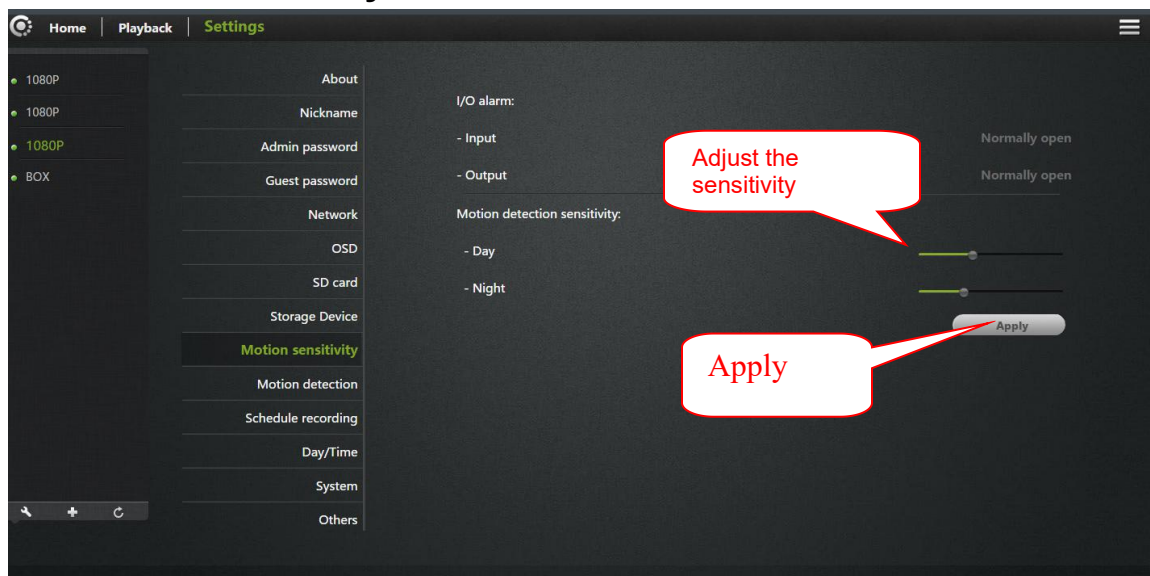
## 5.8 Storage Device:

Camera connection cloud box



Note: Cloud box to ensure online.

## 5.9 Motion sensitivity:



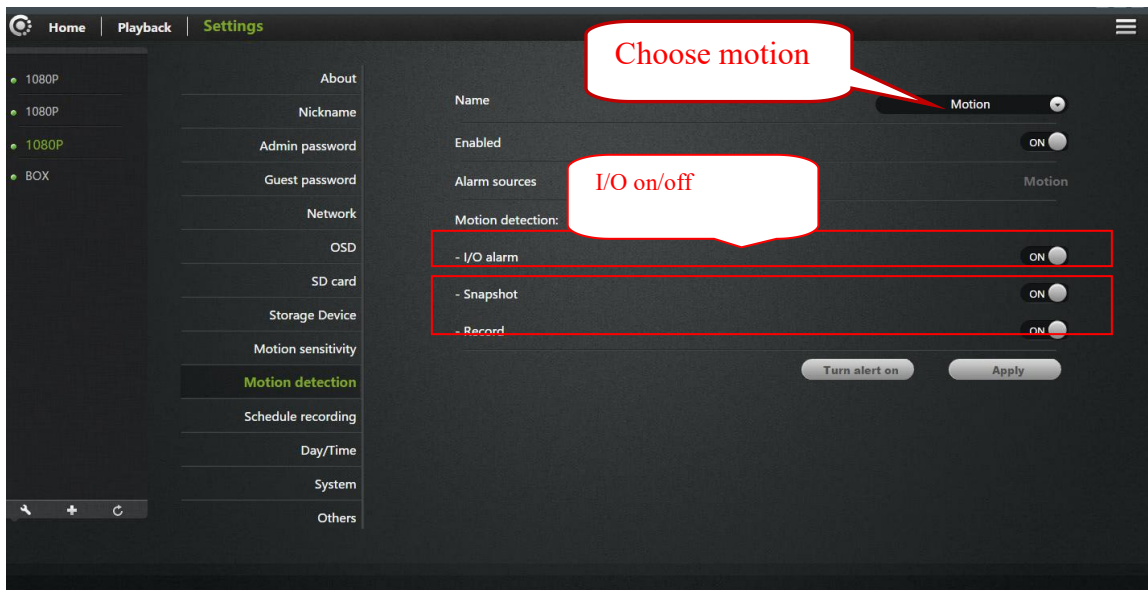
**I / O Alarm input:** When normally open, alarm input port connect with an external alarm sensor (such as door sensor, infrared, smoke alarm detector, etc.) must be a normally open alarm probes. When

alarm occurs, the probe switch is closed; network cameras generate alarm triggers, alarm calls according to user settings.

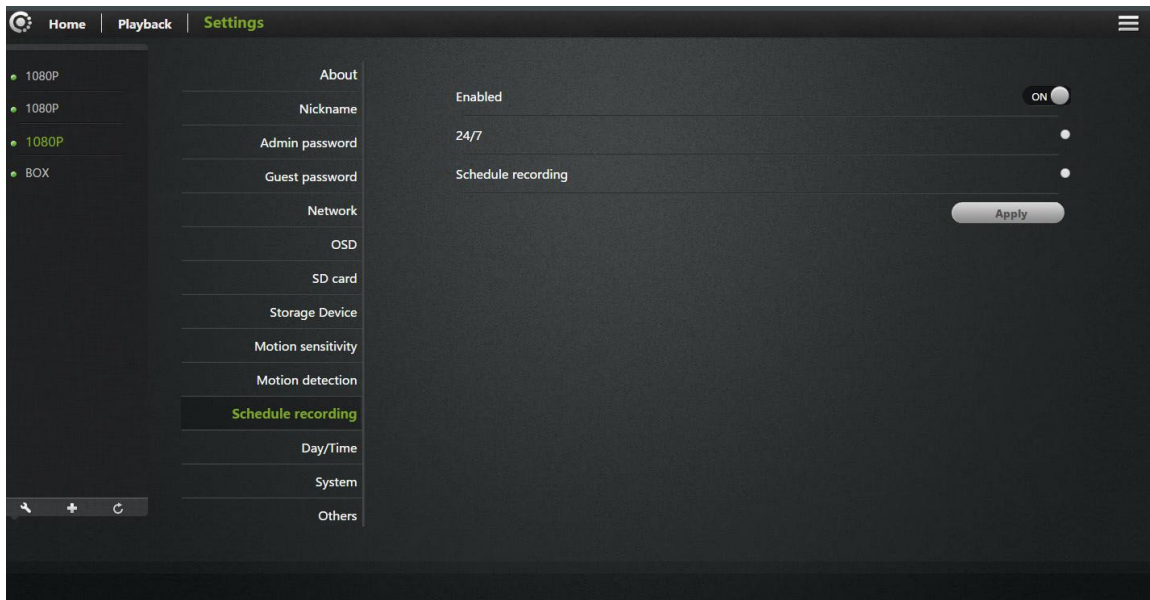
**I / O Alarm output:** When normally open, alarm output port corresponding external alarm devices (such as alarm loudspeakers, sound and light alarm equipment, etc.) must be a normally open type, when an event has occurred, the user sets the Alarm I / O port output , camera alarm output switch is closed, trigger external alarm devices.

**Sensitivity:** To set the sensitivity of motion detection, the greater the value the higher the sensitivity, relatively the probability of false alarms generated will be higher, generally we recommend user to choose the default values, the user also can set up sensitivity based on their will.

## 5.10 Motion detection:

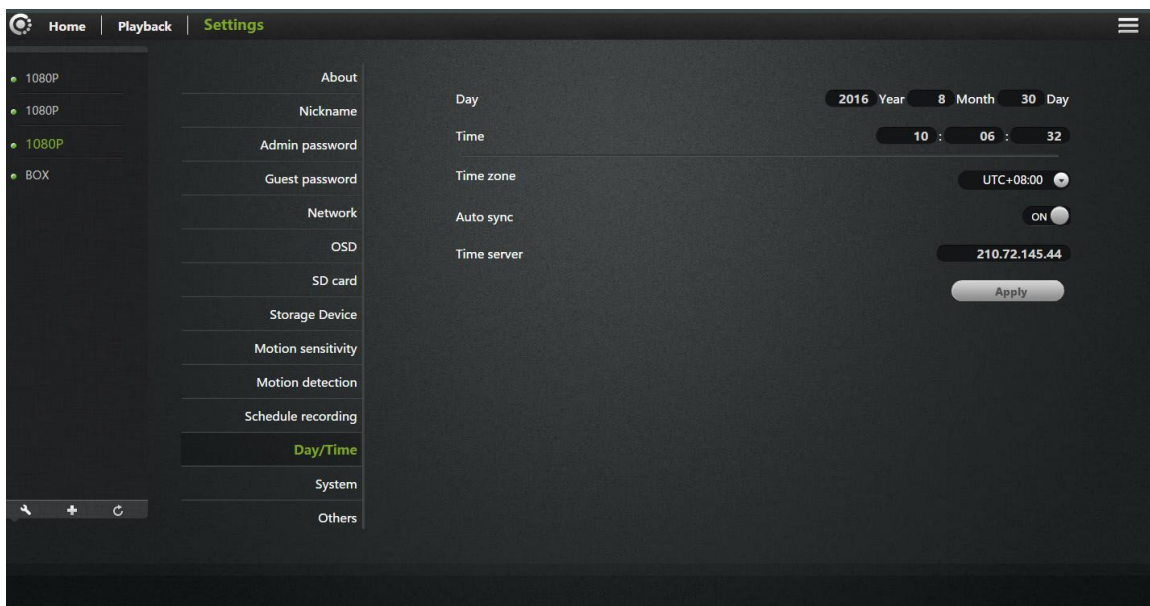


## 5.11 Scheduled recording:



In this option you can choose the 7\* 24 hour video or scheduled recording.  
Note: video files will be stored in SD card, when content is full, it will overridden.

## 5.12 Date / Time:



**Time Server address:** Users can manually enter in the online search to fill the local country time zone server address (default time server address is China time).

**Sync data & time automatically:** When Opening, the cam will automatically synchronize the time displayed on the address bar time server address with corresponding time.

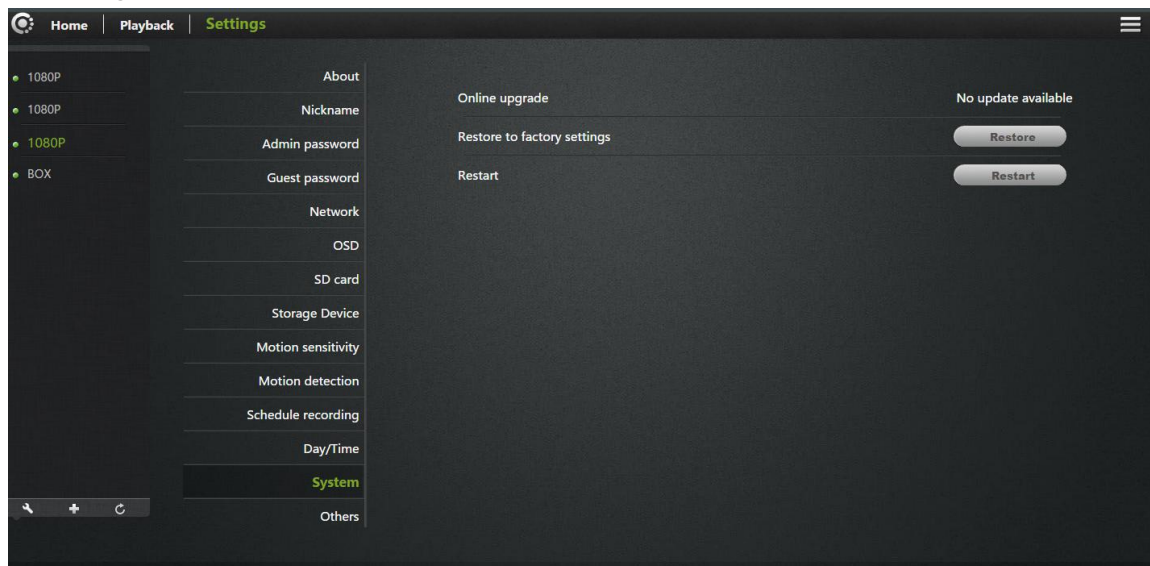
**Time zone:** Users can choose the time zone of the camera.

**Date:** When "time server automatically" turned off, users can manually modify the cam's date.

**Time:** When "time server automatically" turned off, users can manually modify the camera's time.

Click "Apply" to save your changes.

## 5.13 System:



**Online Upgrade:** If you have the latest software, there will be tips <Update> click update, the camera will be online software upgrade, after the upgrade is successful will re-start the Camera.

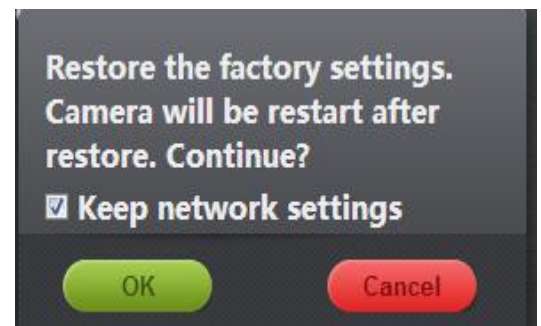
**Restore the factory settings:** The user can click the "Restore" button, will pop up on the right

Diagram tips. When the "Save network device" checked, the point is determined, in addition to

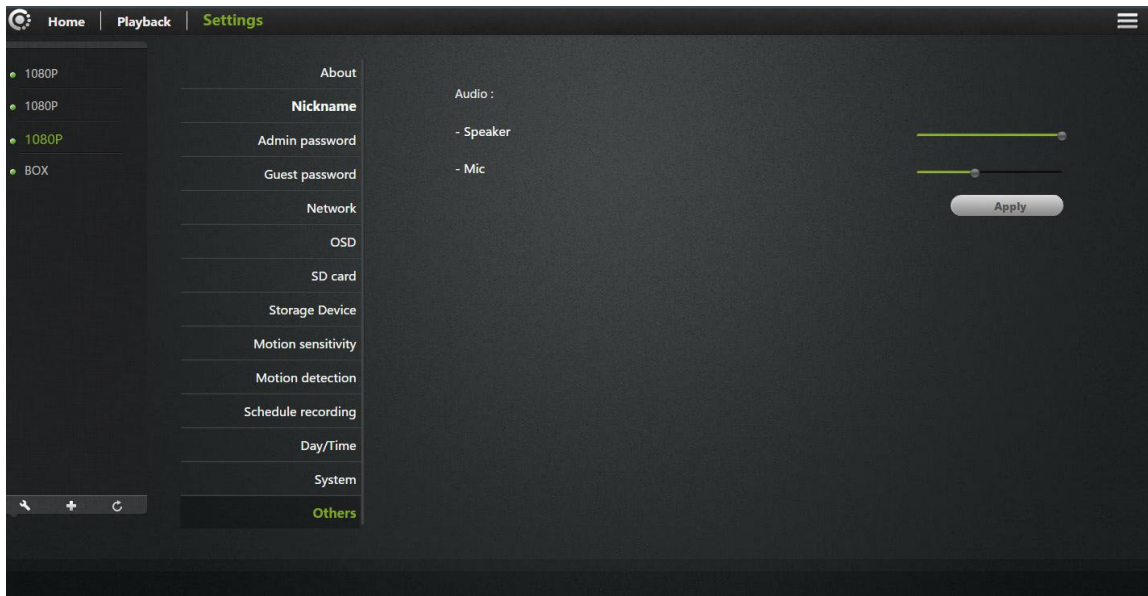
Network setup parameters retained, the other parameters are restored to the factory settings back;

When the "Save Network Device" is not checked, the point is determined, all camera parameters

Few are restored to factory settings back, equivalent to click the RESET button. **Reboot:** Click the reset button after the restart of the camera.



## 5.14 Other:



### Audio:

**Speaker:** Set the size of the camera's speaker sound, use the mouse to drag the slider to set, the greater the value, the greater the sound from the speaker.

**Mac:** Sets the camera microphone sensitivity, drag the slider with the mouse settings, the greater the value, the more sensitive the microphone receiving sound external environment more, the computer listens to the voice of the larger end, the corresponding listening to ambient noise is greater.

**Flip:** To turn upside down.

**Power Frequency:** 50Hz and 60Hz with two frequencies selected the user machine installation area under power frequency to choose.

Click Apply to save your changes.

## 6. Troubleshooting

This chapter provides solutions for questions or problems in camera installation and operation.


If you encounter problems, please follow solutions below. (Below we take Windows ® Vista ™ and XP as example. Different operation systems have the similar operation.)

### 1). what is Remote Access? How to do that?

Remote access means that you can access a camera from a web on any PC through internet. So even if you are not at home, you can access a camera, view live video and manage its settings.

How to do that? Please follow the Quick Installation Manual in the packing box.

If your camera does not work, please check whether the following things are right.

....() on the camera flashes green 3 times every 3 seconds

....Internet connection is working properly

... The router's LAN & WAN connection are working properly.

... Router UPNP and DHCP are on

... Routers can get a public IP.

... Router has been upgraded to the latest firmware version

... Restore your camera to factory settings by press “RESET” key one time on camera bottom

... Disconnect router power supply and connect it again to restart

Try again to make your camera work after the above checking.

### 2). Why is network connection unstable?

Network cable may get a problem. You can PING the address of a existing device in the same network.

If network cable connects right and network connect right, you should get a reply like bytes = 32 time = 2 ms.

Another possibility is that the network equipments like hubs and switches may have problems. Ensure all network equipments connect and work well.

### 3). Why does the APP show camera not online?

This may be caused by firewall protection (such as MAC addresses filtering, MAC address binding with the IP address). In this situation, please contact your system administrator to check firewall.

Firewall may need some configuration changes. For more information, please refer to camera installation.

Ensure (  ) or (  ) flashes 3 times every 3 seconds.

Router default settings may have a problem. Ensure router DHCP server is on.

If there are multi-level routers, each should connect the other through WAN (for example, the 1st router LAN connects the 2<sup>nd</sup> router LAN by a network cable). If problem still exists, connect your camera with power, and then press “RESET” key on the bottom to restore to factory settings.

#### **4). Why are there vertical white lines in image?**

CMOS sensor being exposed to strong light (such as direct exposure to sunlight or halogen light) may cause this problem. CMOS sensor is behind the lens. It is to measure the optical signal and convert it to a digital format, then the computer will convert digital format to images to users. If the CMOS sensor has been in high light for a long time remember not to move it to dark places for it may damage the sensor.

#### **5). Blur image. What to do?**

When camera works in dark places, its image may get blur.

Or, your camera does not focus properly. Rotate the lens till you see a clear image.

Web viewing on a computer may get a blur image. Because a computer has much larger screen than a phone, and same resolution image will be amplified.

#### **6). Image quality is poor, how to improve it?**


Open [www.mipcm.com](http://www.mipcm.com) and login. Find image quality configuration to adjust the parameters to improve image quality (e.g.: brightness, contrast, color saturation).


#### **7). When I view on a web, there is no image. Why?**

If you are using Internet Explorer, please make sure ActiveX is on. You may need to modify the browser's security settings to allow ActiveX plug-in installed.

If you are using Internet Explorer versions earlier than 7.0, you need to upgrade your Web browser.

## 8). Troubleshooting, LED status indication:

| Indicator   | LED status                           | Status Description   | Troubleshooting   |
|---|--------------------------------------|--|---|
| POWER (power indicator)   | <b>Red light</b><br>Normally on      | Power supply is normal   | If light is not lit, check the power supply is damaged or the camera hardware failure, requiring repair.  |
|  | (OFF)                                | Wifi was disabled by the user or wifi hardware failure   | <ol style="list-style-type: none"> <li>1. Press RESET for 5 seconds to restore the factory settings.</li> <li>2. Make camera with wired Ethernet connection, after landing, in the "Manage" -&gt; "Network", make WIFI enabled;</li> <li>3. Camera hardware failure, requiring repair.</li> </ol>   |
|   | <b>Red light</b><br>Normally on      | WIFI router is trying to connect   | <ol style="list-style-type: none"> <li>1. Verify WIFI router is good;</li> <li>2. Try the camera placed from somewhere near WIFI router and then reconnect the power.</li> <li>3. Restart WIFI routers and cameras;</li> <li>4. Camera hardware failure, requiring repair.</li> </ol>   |
|   | <b>Red</b><br>Flashing 2 times       | Is connected to the router, is trying to obtain an IP address through DHCP   | <ol style="list-style-type: none"> <li>1. Please make sure your router's DHCP server is enabled.</li> <li>2. Try to restart the router.</li> <li>3. Manually assign a WIFI router to the same gateway IP address.</li> </ol>  |
|   | <b>Red light</b><br>flashing 3 times | Ip address has been obtained or the user to configure a static ip address, is trying to communicate with the gateway | <ol style="list-style-type: none"> <li>1. Confirm the router is good.</li> <li>2. Camera hardware failure, requiring repair.</li> </ol>   |
|   | <b>Green light</b><br>Normally on    | And gateway communication is normal, is trying to communicate with the internet                                      | <ol style="list-style-type: none"> <li>1. User can check whether the network can access the Internet.</li> <li>2. Check whether there are two routers connected (first level router network cable will need to receive a second-class router's WAN port on the job).</li> <li>3. Try the camera placed from somewhere near WIFI router and then reconnect the power.</li> <li>4. Check the router is turned on the firewall to</li> </ol> |

|   |  |   |  |
|---|--|---|--|
|   |  |   | do MAC address filtering.  |
|   | Green<br>flashing 2<br>times                     | Internet traffic is normal, is trying to communicate with the cloud server  | 1. Restart the machine or the machine on again to restart.<br>2. Try running the camera, based on the press camera base RESET button hole 6 seconds, set the camera to restore the factory tune.     |
|   | Green light<br>flashing 3<br>times               | Normal communication with the cloud server, you can access the camera via cloud services  | Normal   |
|   | Red \ green<br>lights<br>flashing<br>alternately | Wi-Fi for adhoc mode (Wi-Fi did not configure the router / router connection failed / DHCP fails to enter this mode), you can Wi-Fi terminal (mobile phone / pad / notebook computers) connected to the wireless network, and then access the camera through 192.168.188.254. | References Cloud Camera Quick Installation Guide   |
|  | (OFF   | Ethernet is disabled by the user or the network cable is not connected or Ethernet card hardware failure  | 1. Users press RESET 5 seconds to restore the factory settings.<br>2. Check \ replace the camera and connect the network cable between the routers.<br>3. Camera hardware failure, requiring repair. |
|   | Red light  | Network cable is connected, the IP address is obtained  | 1. Please make sure your routers DHCP server is enabled.<br>2. Try to restart the router.  |

|  |  |  |  |
|--|--|--|--|
|  |  |  | 3. Manually assign a letter to the Ethernet IP address of the router the same gateway.   |
|  | Flashing<br>red                                  | IP address has been obtained or the user to configure a static IP address, is trying to communicate with the gateway   | 1. Confirm whether the router is good.<br>2. Camera hardware failure, requiring repair.  |
|  | Green light                                      | And gateway communication is normal, is trying to communicate with the internet  | 1. The user to check whether the network can access the Internet.<br>2. Check whether there are two routers connected (first level router network cable will need to receive a second-class router's WAN port on the job).<br>3. Check the router is turned on the firewall to do MAC address filtering. |
|  | Green<br>flashing 2<br>times                     | Internet traffic is normal, is trying to communicate with the cloud server   | 1. Restart the machine or the machine on again to restart.<br>2. Try running the machine, based on the press machine base RESET button hole 6 seconds, set the machine to restore the factory tune.  |
|  | Green light<br>flashing 3<br>times               | Normal communication with the cloud server, you can access the camera via cloud services   | Normal   |
|  | Red \ green<br>lights<br>flashing<br>alternately | DHCP fails, use a temporary IP address 192.168.187.254, Users can access the same computer and webcam LAN, set different segments IP (192.168.187.xxx), and then access the camera through 192.168.187.254 | References << >> Cloud Camera Quick Installation Guide.  |

## 7. Wireless Infrastructure

IP CAMERA wireless products are based on industry standards for your home, business or public access wireless networks to provide easy and compatible high-speed wireless connection. IP CAMERA strictly follows the IEEE standard.

Wireless LAN (WLAN) is network that transmits and receives data through wireless signal not electrical wiring. WLAN is increasingly used in home, office, airport, coffee shop, and other public places. WLAN needs no electrical wiring or other base equipments. It helps people to work and communicate easier and more efficient with its mobility.

### **Tips:**

When you use a wireless network, please note the following:

#### **Put your router or access point at center area**

Put the router / access point at the highest point of the room, so the signal can be distributed to whole room space. If you have a two-story house, you need to install a repeater to extend signal coverage.

#### **Eliminate interference**

Make sure home appliances such as cordless telephones, microwaves, and televisions are far from the router / access point, which helps reduce interference.

#### **Safety**

Prevent your next door neighbors or others connecting to your wireless network. Open WPA or WEP in the router to protect your wireless network. Please refer to the product manual for more information on this feature.